

Anti-NIF3L1 antibody

Cat. No.	ml121595
Package	25 µl/100 µl/200 µl
Storage	-20°C, pH7.4 PBS, 0.05% NaN ₃ , 40% Glycerol

Product overview

Description	Anti-NIF3L1 rabbit polyclonal antibody
Applications	ELISA, IHC
Immunogen	Fusion protein of human NIF3L1
Reactivity	Human, Mouse, Rat
Content	0.2 mg/ml
Host species	Rabbit
Ig class	Immunogen-specific rabbit IgG
Purification	Antigen affinity purification

Target information

Symbol	NIF3L1
Full name	NIF3 NGG1 interacting factor 3-like 1 (S. cerevisiae)
Synonyms	CALS-7; MDS015; ALS2CR1
Swissprot	Q9GZT8

Target Background

NIF3-like protein 1 is a protein that in humans is encoded by the NIF3L1 gene. NIF3L1 has been shown to interact with COPS2. Expression analysis on cell lines revealed strong overexpression in a spermatogonia-derived cell line and a teratocarcinoma cell line. A human NIF3L1/GFP fusion protein showed localization of the protein in the cytoplasm.

订购热线: 4008-898-798

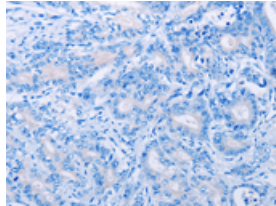
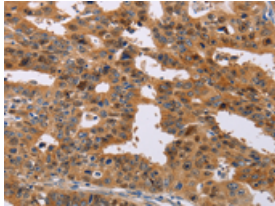
Applications

Immunohistochemistry

Predicted cell location: Cytoplasm

Positive control: Human gasrtic cancer

Recommended dilution: 50-200

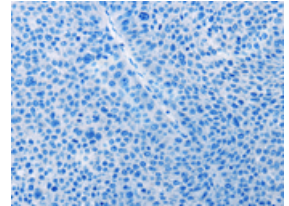
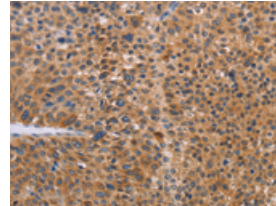


The image on the left is immunohistochemistry of paraffin-embedded Human gasrtic cancer tissue using ml121595(NIF3L1 Antibody) at dilution 1/30, on the right is treated with fusion protein. (Original magnification: ×200)

Predicted cell location: Cytoplasm

Positive control: Human liver cancer

Recommended dilution: 50-200



The image on the left is immunohistochemistry of paraffin-embedded Human liver cancer tissue using ml121595(NIF3L1 Antibody) at dilution 1/30, on the right is treated with fusion protein. (Original magnification: ×200)

ELISA

Recommended dilution: 2000-5000

联系电话: 4008-898-798, 021-61725725

联系QQ: 2881505695, 2881505696

邮箱: mlbio_cn@yeah.net

网址: www.mlbio.cn