

Anti-AMBRA1 antibody

Cat. No.	ml121602
Package	25 µl/100 µl/200 µl
Storage	-20°C, pH7.4 PBS, 0.05% NaN ₃ , 40% Glycerol

Product overview

Description	Anti-AMBRA1 rabbit polyclonal antibody
Applications	ELISA, IHC
Immunogen	Fusion protein of human AMBRA1
Reactivity	Human, Mouse
Content	0.3 mg/ml
Host species	Rabbit
Ig class	Immunogen-specific rabbit IgG
Purification	Antigen affinity purification

Target information

Symbol	AMBRA1
Full name	autophagy/beclin-1 regulator 1
Synonyms	DCAF3; WDR94
Swissprot	Q9C0C7

Target Background

Human AMBRA1, which encodes a deduced 1,269-amino acid protein. Ambra1 was expressed throughout development in mice, with strong staining in the neuroepithelium. Regulates autophagy and development of the nervous system. Involved in autophagy in controlling protein turnover during neuronal development, and in regulating normal cell survival and proliferation. Interacts with BECN1. Probably forms a complex with BECN1 and PIK3C3.

订购热线: 4008-898-798

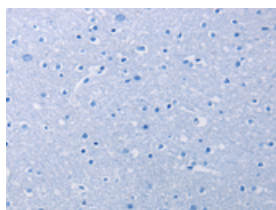
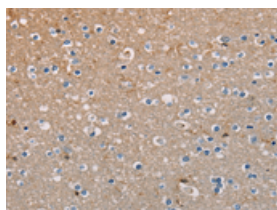
Applications

Immunohistochemistry

Predicted cell location: Cytoplasm

Positive control: Human brain

Recommended dilution: 50-200

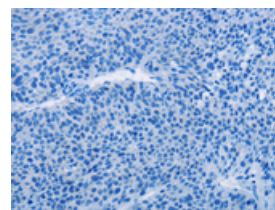
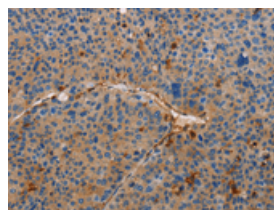


The image on the left is immunohistochemistry of paraffin-embedded Human brain tissue using ml121602(AMBRA1 Antibody) at dilution 1/50, on the right is treated with fusion protein. (Original magnification: $\times 200$)

Predicted cell location: Cytoplasm

Positive control: Human liver cancer

Recommended dilution: 50-200



The image on the left is immunohistochemistry of paraffin-embedded Human liver cancer tissue using ml121602(AMBRA1 Antibody) at dilution 1/50, on the right is treated with fusion protein. (Original magnification: $\times 200$)

ELISA

Recommended dilution: 2000-5000

联系电话: 4008-898-798, 021-61725725

联系QQ: 2881505695, 2881505696

邮箱: mlbio_cn@yeah.net

网址: www.mlbio.cn