

## Anti-PIWIL4 antibody

|                 |   |
|-----------------|---|
| <b>Cat. No.</b> | ml121135  |
| <b>Package</b>  | 25 µl/100 µl/200 µl                                     |
| <b>Storage</b>  | -20°C, pH7.4 PBS, 0.05% NaN <sub>3</sub> , 40% Glycerol |

### Product overview

|                     |  |
|---------------------|--|
| <b>Description</b>  | Anti-PIWIL4 rabbit polyclonal antibody |
| <b>Applications</b> | ELISA, WB                              |
| <b>Immunogen</b>    | Fusion protein of human PIWIL4         |
| <b>Reactivity</b>   | Human, Mouse, Rat                      |
| <b>Content</b>      | 0.4 mg/ml                              |
| <b>Host species</b> | Rabbit                                 |
| <b>Ig class</b>     | Immunogen-specific rabbit IgG          |
| <b>Purification</b> | Antigen affinity purification          |

### Target information

|                  |   |
|------------------|---|
| <b>Symbol</b>    | PIWIL4                                  |
| <b>Full name</b> | Piwi-like RNA-mediated gene silencing 4 |
| <b>Synonyms</b>  | HIWI2; MIWI2                            |
| <b>Swissprot</b> | Q7Z3Z4                                  |

### Target Background

PIWIL4 belongs to the Argonaute family of proteins, which function in development and maintenance of germline stem cells. Plays a central role during spermatogenesis by repressing transposable elements and prevent their mobilization, which is essential for the germline integrity. Acts via the piRNA metabolic process, which mediates the repression of transposable elements during meiosis by forming complexes composed of piRNAs and Piwi proteins and govern the methylation and subsequent repression of transposons. Directly binds piRNAs, a class of 24 to 30 nucleotide RNAs that are generated by a Dicer-independent mechanism and are primarily derived from transposons and other repeated sequence elements. Associates with secondary piRNAs antisense and PIWIL2/MILI is required for such association.

订购热线: 4008-898-798

#### Applications

##### Western blotting

Predicted band size: 97 kDa

Positive control: HeLa, 231 and 293T cells

Recommended dilution: 500-2000

Gel: 8% SDS-PAGE

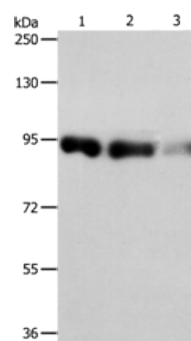
Lysate: 40 µg

Lane 1-3: HeLa cells, 231 cells, 293T cells

Primary antibody: ml121135 (PIWIL4 Antibody) at dilution 1/550

Secondary antibody: Goat anti rabbit IgG at 1/8000 dilution

Exposure time: 10 seconds



##### ELISA

Recommended dilution: 2000-5000

联系电话: 4008-898-798, 021-61725725

联系QQ: 2881505695, 2881505696

邮箱: [mlbio\\_cn@yeah.net](mailto:mlbio_cn@yeah.net)

网址: [www.mlbio.cn](http://www.mlbio.cn)