

Anti-SPDL1 antibody

Cat. No.	ml121266
Package	25 µl/100 µl/200 µl
Storage	-20°C, pH7.4 PBS, 0.05% NaN ₃ , 40% Glycerol

Product overview

Description	Anti-SPDL1 rabbit polyclonal antibody
Applications	ELISA, WB
Immunogen	Fusion protein of human SPDL1
Reactivity	Human, Mouse
Content	0.2 mg/ml
Host species	Rabbit
Ig class	Immunogen-specific rabbit IgG
Purification	Antigen affinity purification

Target information

Symbol	SPDL1
Full name	Spindle apparatus coiled-coil protein 1
Synonyms	CCDC99
Swissprot	Q96EA4

Target Background

Required for the localization of dynein and dynactin to the mitotic kintochore. Dynein is believed to control the initial lateral interaction between the kinetochore and spindle microtubules and to facilitate the subsequent formation of end-on kinetochore-microtubule attachments mediated by the NDC80 complex. Also required for correct spindle orientation. Does not appear to be required for the removal of spindle assembly checkpoint (SAC) proteins from the kinetochore upon bipolar spindle attachment. Interacts with KNTC1 and ZW10. These interactions appear weak and may be transient or indirect.

订购热线: 4008-898-798

Applications

Western blotting

Predicted band size: 70 kDa; 59 kDa

Positive control: Hela cells, mouse testis tissue and Jurkat cells

Recommended dilution: 500-2000

Gel: 8%SDS-PAGE

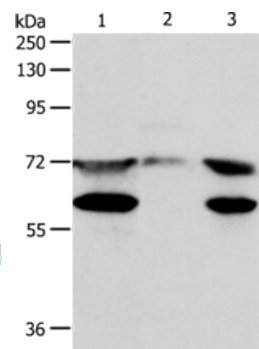
Lysate: 40 µg

Lane 1-3: Hela cells, mouse testis tissue, Jurkat cells

Primary antibody: ml121266(SPDL1 Antibody) at dilution 1/400

Secondary antibody: Goat anti rabbit IgG at 1/8000 dilution

Exposure time: 30 seconds



ELISA

Recommended dilution: 2000-5000

联系电话: 4008-898-798, 021-61725725

联系QQ: 2881505695, 2881505696

邮箱: mlbio_cn@yeah.net

网址: www.mlbio.cn