

Anti-ABCE1 antibody

Cat. No.	ml121441
Package	25 µl/100 µl/200 µl
Storage	-20°C, pH7.4 PBS, 0.05% NaN ₃ , 40% Glycerol

Product overview

Description	Anti-ABCE1 rabbit polyclonal antibody
Applications	ELISA, WB
Immunogen	Fusion protein of human ABCE1
Reactivity	Human, Mouse
Content	0.1 mg/ml
Host species	Rabbit
Ig class	Immunogen-specific rabbit IgG
Purification	Antigen affinity purification

Target information

Symbol	ABCE1
Full name	ATP-binding cassette, sub-family E (OABP), member 1
Synonyms	RLI; OABP; ABC38; RNS4I; RNASEL1; RNASELI
Swissprot	P61221

Target Background

The protein encoded by this gene is a member of the superfamily of ATP-binding cassette (ABC) transporters. ABC proteins transport various molecules across extra- and intra-cellular membranes. ABC genes are divided into seven distinct subfamilies (ABC1, MDR/TAP, MRP, ALD, OABP, GCN20, White). This protein is a member of the OABP subfamily. Alternatively referred to as the RNase L inhibitor, this protein functions to block the activity of ribonuclease L. Activation of ribonuclease L leads to inhibition of protein synthesis in the 2-5A/RNase L system, the central pathway for viral interferon action. Two transcript variants encoding the same protein have been found for this gene.

订购热线: 4008-898-798

Applications

Western blotting

Predicted band size: 67 kDa

Positive control: NIH/3T3 and SKOV3 cells, human ovarian cancer tissue

Recommended dilution: 500-2000

Gel: 10%SDS-PAGE

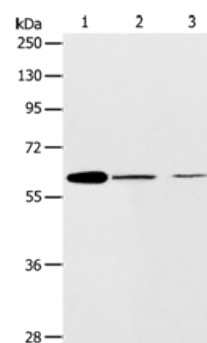
Lysate: 40 µg

Lane 1-3: NIH/3T3 cells, SKOV3 cells, human ovarian cancer tissue

Primary antibody: ml121441(ABCE1 Antibody) at dilution 1/450

Secondary antibody: Goat anti rabbit IgG at 1/8000 dilution

Exposure time: 2 minutes



ELISA

Recommended dilution: 2000-5000

联系电话: 4008-898-798, 021-61725725

联系QQ: 2881505695, 2881505696

邮箱: mlbio_cn@yeah.net

网址: www.mlbio.cn