

Anti-ORM1 antibody

Cat. No.	ml121584
Package	25 µl/100 µl/200 µl
Storage	-20°C, pH7.4 PBS, 0.05% NaN ₃ , 40% Glycerol

Product overview

Description	Anti-ORM1 rabbit polyclonal antibody
Applications	ELISA, WB
Immunogen	Fusion protein of human ORM1
Reactivity	Human
Content	0.2 mg/ml
Host species	Rabbit
Ig class	Immunogen-specific rabbit IgG
Purification	Antigen affinity purification

Target information

Symbol	ORM1
Full name	orosomucoid 1
Synonyms	ORM; AGP1; AGP-A
Swissprot	P02763

Target Background

This gene encodes a key acute phase plasma protein. Because of its increase due to acute inflammation, this protein is classified as an acute-phase reactant. The specific function of this protein has not yet been determined; however, it may be involved in aspects of immunosuppression.

订购热线: 4008-898-798

Applications

Western blotting

Predicted band size: 24 kDa

Positive control: Human testis and prostate tissue

Recommended dilution: 200-1000

Gel: 12%SDS-PAGE

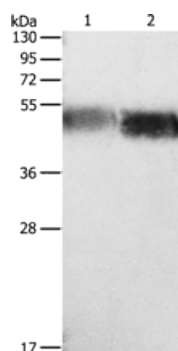
Lysate: 40 µg

Lane 1-2: Human testis tissue, Human prostate tissue

Primary antibody: ml121584(ORM1 Antibody) at dilution 1/133

Secondary antibody: Goat anti rabbit IgG at 1/8000 dilution

Exposure time: 2 minutes



ELISA

Recommended dilution: 1000-2000

联系电话: 4008-898-798, 021-61725725

联系QQ: 2881505695, 2881505696

邮箱: mlbio_cn@yeah.net

网址: www.mlbio.cn