

Anti-ACTA1 antibody

Cat. No.	ml121592
Package	25 µl/100 µl/200 µl
Storage	-20°C, pH7.4 PBS, 0.05% NaN ₃ , 40% Glycerol

Product overview

Description	Anti-ACTA1 rabbit polyclonal antibody
Applications	ELISA, WB
Immunogen	Fusion protein of human ACTA1
Reactivity	Human, Mouse, Rat
Content	0.2 mg/ml
Host species	Rabbit
Ig class	Immunogen-specific rabbit IgG
Purification	Antigen affinity purification

Target information

Symbol	ACTA1
Full name	actin, alpha 1, skeletal muscle
Synonyms	ACTA; ASMA; CFTD; MPFD; NEM1; NEM2; NEM3; CFTD1; CFTDM
Swissprot	P68133

Target Background

The product encoded by this gene belongs to the actin family of proteins, which are highly conserved proteins that play a role in cell motility, structure and integrity. Alpha, beta and gamma actin isoforms have been identified, with alpha actins being a major constituent of the contractile apparatus, while beta and gamma actins are involved in the regulation of cell motility. This actin is an alpha actin that is found in skeletal muscle. Mutations in this gene cause nemaline myopathy type 3, congenital myopathy with excess of thin myofilaments, congenital myopathy with cores, and congenital myopathy with fiber-type disproportion, diseases that lead to muscle fiber defects.

订购热线: 4008-898-798

Applications

Western blotting

Predicted band size: 42 kDa

Positive control: Mouse heart and muscle tissue

Recommended dilution: 200-1000

Gel: 10% SDS-PAGE

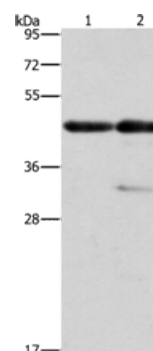
Lysate: 40 µg

Lane 1-2: Mouse heart tissue, Mouse muscle tissue

Primary antibody: ml121592 (ACTA1 Antibody) at dilution 1/275

Secondary antibody: Goat anti rabbit IgG at 1/8000 dilution

Exposure time: 10 seconds



ELISA

Recommended dilution: 1000-2000

联系电话: 4008-898-798, 021-61725725

联系QQ: 2881505695, 2881505696

邮箱: mlbio_cn@yeah.net

网址: www.mlbio.cn