

Anti-CARF antibody

Cat. No.	ml121598
Package	25 µl/100 µl/200 µl
Storage	-20°C, pH7.4 PBS, 0.05% NaN ₃ , 40% Glycerol

Product overview

Description	Anti-CARF rabbit polyclonal antibody
Applications	ELISA, WB
Immunogen	Fusion protein of human CARF
Reactivity	Human
Content	0.3 mg/ml
Host species	Rabbit
Ig class	Immunogen-specific rabbit IgG
Purification	Antigen affinity purification

Target information

Symbol	CARF
Full name	calcium responsive transcription factor
Synonyms	ALS2CR8; NYD-SP24
Swissprot	Q8N187

Target Background

CARF (calcium-response factor), also known as ALS2CR8 (amyotrophic lateral sclerosis 2 chromosomal region candidate gene 8 protein) or NYD-SP24, is a 725 amino acid nuclear protein. Expressed in a wide variety of tissues with highest expression in the hippocampus, CARF is thought to be a transcription factor that associates with the p53 tumor suppression pathway. CARF cooperates, co-localizes and is co-regulated with ARF, an ADP-ribosylation factor, and, through this interaction, helps to mediate ARF-p53-induced apoptotic signaling. This apoptotic pathway is implicated in cell cycle control, proper cellular development, response to DNA damage and the aging process, suggesting that CARF participates in various events throughout the cell.

订购热线: 4008-898-798

Applications

Western blotting

Predicted band size: 81 kDa

Positive control: Human testis tissue and K562 cells

Recommended dilution: 200-1000

Gel: 6%SDS-PAGE

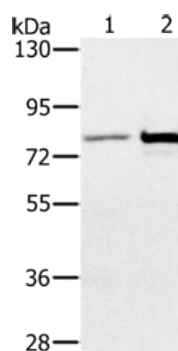
Lysate: 40 µg

Lane 1-2: Human testis tissue, K562 cells

Primary antibody: ml121598(CARF Antibody) at dilution 1/300

Secondary antibody: Goat anti rabbit IgG at 1/8000 dilution

Exposure time: 2 minutes



ELISA

Recommended dilution: 1000-2000

联系电话: 4008-898-798, 021-61725725

联系QQ: 2881505695, 2881505696

邮箱: mlbio_cn@yeah.net

网址: www.mlbio.cn