

Anti-ALS2CR11 antibody

Cat. No.	ml121599
Package	25 µl/100 µl/200 µl
Storage	-20°C, pH7.4 PBS, 0.05% NaN ₃ , 40% Glycerol

Product overview

Description	Anti-ALS2CR11 rabbit polyclonal antibody
Applications	ELISA, WB
Immunogen	Fusion protein of human ALS2CR11
Reactivity	Human, Mouse
Content	0.1 mg/ml
Host species	Rabbit
Ig class	Immunogen-specific rabbit IgG
Purification	Antigen affinity purification

Target information

Symbol	ALS2CR11
Full name	amyotrophic lateral sclerosis 2 (juvenile) chromosome region, candidate 11
Synonyms	
Swissprot	Q53TS8

Target Background

This gene has highly expression in digestive system component and liver, biliary system. It may have four isoforms that produced by alternative splicing. Transcription profiling of human mesenchymal stem cells transformed with lentiviral vectors of TERT, E6, SV40 and RAS.

订购热线: 4008-898-798

Applications

Western blotting

Predicted band size: 71 kDa

Positive control: HeLa and SKOV3 cells, mouse liver tissue

Recommended dilution: 200-1000

Gel: 10% SDS-PAGE

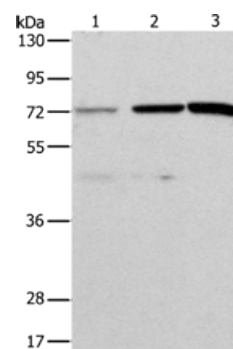
Lysate: 40 µg

Lane 1-3: HeLa cells, SKOV3 cells, mouse liver tissue

Primary antibody: ml121599(ALS2CR11 Antibody) at dilution 1/500

Secondary antibody: Goat anti rabbit IgG at 1/8000 dilution

Exposure time: 5 minutes



ELISA

Recommended dilution: 1000-2000

联系电话: 4008-898-798, 021-61725725

联系QQ: 2881505695, 2881505696

邮箱: mlbio_cn@yeah.net

网址: www.mlbio.cn