

Anti-ANAPC13 antibody

Cat. No.	ml121646
Package	25 µl/100 µl/200 µl
Storage	-20°C, pH7.4 PBS, 0.05% NaN ₃ , 40% Glycerol

Product overview

Description	Anti-ANAPC13 rabbit polyclonal antibody
Applications	ELISA, WB
Immunogen	Fusion protein of human ANAPC13
Reactivity	Human, Mouse
Content	0.3 mg/ml
Host species	Rabbit
Ig class	Immunogen-specific rabbit IgG
Purification	Antigen affinity purification

Target information

Symbol	ANAPC13
Full name	anaphase promoting complex subunit 13
Synonyms	SWM1; APC13
Swissprot	Q9BS18

Target Background

This gene encodes a component of the anaphase promoting complex, a large ubiquitin-protein ligase that controls cell cycle progression by regulating the degradation of cell cycle regulators such as B-type cyclins. The encoded protein is evolutionarily conserved and is required for the integrity and ubiquitin ligase activity of the anaphase promoting complex. Pseudogenes and splice variants have been found for this gene; however, the biological validity of some of the splice variants has not been determined.

订购热线: 4008-898-798

Applications

Western blotting

Predicted band size: 8.5 kDa

Positive control: Jurkat and RAW264.7 cells

Recommended dilution: 500-2000

Gel: 12+15% SDS-PAGE

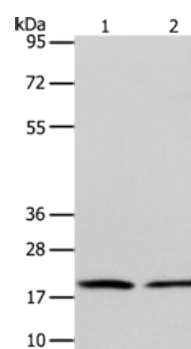
Lysate: 40 µg

Lane 1-2: Jurkat cells, RAW264.7 cells

Primary antibody: ml121646 (ANAPC13 Antibody) at dilution 1/600

Secondary antibody: Goat anti rabbit IgG at 1/8000 dilution

Exposure time: 1 minute



ELISA

Recommended dilution: 2000-5000

联系电话: 4008-898-798, 021-61725725

联系QQ: 2881505695, 2881505696

邮箱: mlbio_cn@yeah.net

网址: www.mlbio.cn