

Anti-ARFGAP1 antibody

Cat. No.	ml121677
Package	25 µl/100 µl/200 µl
Storage	-20°C, pH7.4 PBS, 0.05% NaN ₃ , 40% Glycerol

Product overview

Description	Anti-ARFGAP1 rabbit polyclonal antibody
Applications	ELISA, WB
Immunogen	Fusion protein of human ARFGAP1
Reactivity	Human, Mouse
Content	0.3 mg/ml
Host species	Rabbit
Ig class	Immunogen-specific rabbit IgG
Purification	Antigen affinity purification

Target information

Symbol	ARFGAP1
Full name	ADP-ribosylation factor GTPase activating protein 1
Synonyms	ARF1GAP; HRIHFB2281
Swissprot	Q8N6T3

Target Background

The protein encoded by this gene is a GTPase-activating protein (GAP) which associates with the Golgi apparatus and which interacts with ADP-ribosylation factor 1 (ARF1). The encoded protein promotes hydrolysis of ARF1-bound GTP and is required for the dissociation of coat proteins from Golgi-derived membranes and vesicles. Dissociation of the coat proteins is required for the fusion of these vesicles with target compartments. The activity of this protein is stimulated by phosphoinositides and inhibited by phosphatidylcholine. Two transcript variants encoding different isoforms have been found for this gene.

订购热线: 4008-898-798

Applications

Western blotting

Predicted band size: 45 kDa

Positive control: 293T, PC3 and NIH/3T3 cells

Recommended dilution: 1000-5000

Gel: 10% SDS-PAGE

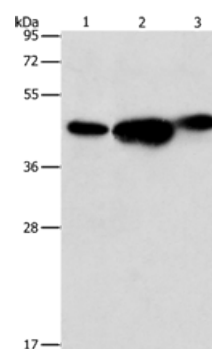
Lysate: 40 µg

Lane 1-3: 293T cells, PC3 cells, NIH/3T3 cells

Primary antibody: ml121677 (ARFGAP1 Antibody) at dilution 1/850

Secondary antibody: Goat anti rabbit IgG at 1/8000 dilution

Exposure time: 10 seconds



ELISA

Recommended dilution: 2000-10000

联系电话: 4008-898-798, 021-61725725

联系QQ: 2881505695, 2881505696

邮箱: mlbio_cn@yeah.net

网址: www.mlbio.cn