

Anti-NEK11 antibody

Cat. No.	ml121839
Package	25 µl/100 µl/200 µl
Storage	-20°C, pH7.4 PBS, 0.05% NaN ₃ , 40% Glycerol

Product overview

Description	Anti-NEK11 rabbit polyclonal antibody
Applications	ELISA, WB
Immunogen	Fusion protein of human NEK11
Reactivity	Human
Content	0.4 mg/ml
Host species	Rabbit
Ig class	Immunogen-specific rabbit IgG
Purification	Antigen affinity purification

Target information

Symbol	NEK11
Full name	NIMA-related kinase 11
Synonyms	
Swissprot	Q8NG66

Target Background

This gene encodes a member of the never in mitosis gene A family of kinases. The encoded protein localizes to the nucleoli, and may function with NEK2A in the S-phase checkpoint. The encoded protein appears to play roles in DNA replication and response to genotoxic stress. Alternatively spliced transcript variants have been described.

订购热线: 4008-898-798

Applications

Western blotting

Predicted band size: 74 kDa

Positive control: A549 and 231 cells

Recommended dilution: 500-2000

Gel: 10% SDS-PAGE

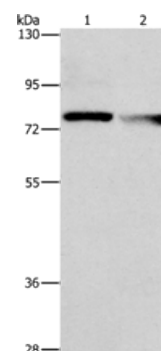
Lysate: 40 µg

Lane 1-2: A549 cells, 231 cells

Primary antibody: ml121839 (NEK11 Antibody) at dilution 1/1000

Secondary antibody: Goat anti rabbit IgG at 1/8000 dilution

Exposure time: 1 minute



ELISA

Recommended dilution: 2000-5000

联系电话: 4008-898-798, 021-61725725

联系QQ: 2881505695, 2881505696

邮箱: mlbio_cn@yeah.net

网址: www.mlbio.cn