

Anti-KHK antibody

Cat. No.	ml121887
Package	25 µl/100 µl/200 µl
Storage	-20°C, pH7.4 PBS, 0.05% NaN ₃ , 40% Glycerol

Product overview

Description	Anti-KHK rabbit polyclonal antibody
Applications	ELISA, WB
Immunogen	Fusion protein of human KHK
Reactivity	Human, Mouse
Content	0.5 mg/ml
Host species	Rabbit
Ig class	Immunogen-specific rabbit IgG
Purification	Antigen affinity purification

Target information

Symbol	KHK
Full name	ketoheokinase (fructokinase)
Synonyms	
Swissprot	P50053

Target Background

This gene encodes ketoheokinase that catalyzes conversion of fructose to fructose-1-phosphate. The product of this gene is the first enzyme with a specialized pathway that catabolizes dietary fructose. Alternatively spliced transcript variants encoding different isoforms have been identified.

订购热线: 4008-898-798

Applications

Western blotting

Predicted band size: 33 kDa

Positive control: Mouse liver and kidney tissue, human fetal liver tissue

Recommended dilution: 1000-5000

Gel: 15% SDS-PAGE

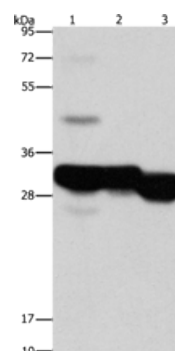
Lysate: 40 µg

Lane 1-3: Mouse liver tissue, Mouse kidney tissue, human fetal liver tissue

Primary antibody: ml121887(KHK Antibody) at dilution 1/1250

Secondary antibody: Goat anti rabbit IgG at 1/8000 dilution

Exposure time: 3 seconds



ELISA

Recommended dilution: 2000-10000

联系电话: 4008-898-798, 021-61725725

联系QQ: 2881505695, 2881505696

邮箱: mlbio_cn@yeah.net

网址: www.mlbio.cn