

Anti-BIN3 antibody

Cat. No.	ml121986
Package	25 µl/100 µl/200 µl
Storage	-20°C, pH7.4 PBS, 0.05% NaN ₃ , 40% Glycerol

Product overview

Description	Anti-BIN3 rabbit polyclonal antibody
Applications	ELISA, WB
Immunogen	Fusion protein of human BIN3
Reactivity	Human, Mouse, Rat
Content	0.4 mg/ml
Host species	Rabbit
Ig class	Immunogen-specific rabbit IgG
Purification	Antigen affinity purification

Target information

Symbol	BIN3
Full name	bridging integrator 3
Synonyms	
Swissprot	Q9NQY0

Target Background

The product of this gene is a member of the BAR domain protein family. The encoded protein is comprised solely of a BAR domain which is predicted to form coiled-coil structures and proposed to mediate dimerization, sense and induce membrane curvature, and bind small GTPases. BAR domain proteins have been implicated in endocytosis, intracellular transport, and a diverse set of other processes

订购热线: 4008-898-798

Applications

Western blotting

Predicted band size: 30 kDa

Positive control: 231, A549, LoVo and HepG2 cells

Recommended dilution: 200-1000

Gel: 12% SDS-PAGE

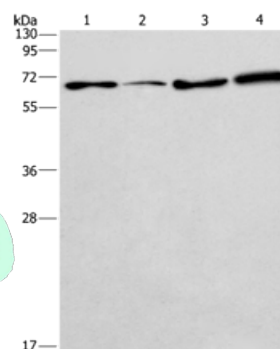
Lysate: 40 µg

Lane 1-4: 231 cells, A549 cells, LoVo cells, HepG2 cells

Primary antibody: ml121986(BIN3 Antibody) at dilution 1/225

Secondary antibody: Goat anti rabbit IgG at 1/8000 dilution

Exposure time: 2 minutes



ELISA

Recommended dilution: 1000-2000

联系电话: 4008-898-798, 021-61725725

联系QQ: 2881505695, 2881505696

邮箱: mlbio_cn@yeah.net

网址: www.mlbio.cn