

Anti-CHRD2 antibody

Cat. No.	ml161558
Package	25 µl/100 µl/200 µl
Storage	-20°C, pH7.4 PBS, 0.05% NaN ₃ , 40% Glycerol

Product overview

Description	Anti-CHRD2 rabbit polyclonal antibody
Applications	ELISA, WB, IHC
Immunogen	Synthetic peptide of human CHRD2
Reactivity	Human
Content	0.3 mg/ml
Host species	Rabbit
Ig class	Immunogen-specific rabbit IgG
Purification	Antigen affinity purification

Target information

Symbol	CHRD2
Full name	chordin-like 2
Synonyms	BNF1; CHL2; FKSG37
Swissprot	Q6WN34

Target Background

CHRD2 (chordin-related protein 2), also known as BNF1 (breast tumor novel factor 1) or CHL2 (chordin-like 2), is a 429 amino acid protein that belongs to the chordin family of proteins. CHRD2 contains three VWFC (von Willebrand Factor type C) domains and is predominantly expressed in uterus and moderately expressed in prostate, liver, ovary, heart and testis. Due to alternative splicing events, CHRD2 exists as five isoforms, namely isoform I, isoform II, isoform VII, isoform VIII and isoform IX. Two of these isoforms are secreted, while the other three localize to the cytoplasm. Functioning as a BMP-binding inhibitor, CHRD2 directly interacts with BMPs and blocks their binding to BMP receptors, thereby inhibiting BMP activity. In breast, lung and colon tumors, CHRD2 expression is upregulated, suggesting a possible role in tumorigenesis.

订购热线: 4008-898-798

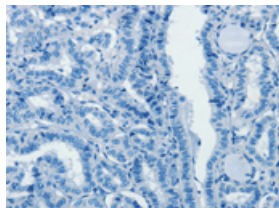
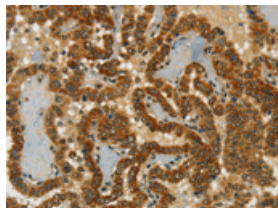
Applications

Immunohistochemistry

Predicted cell location: Cytoplasm

Positive control: Human thyroid cancer

Recommended dilution: 25-100

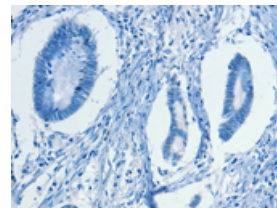
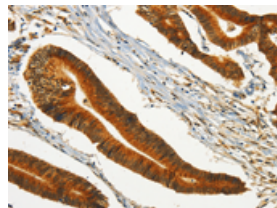


The image on the left is immunohistochemistry of paraffin-embedded Human thyroid cancer tissue using ml161558(CHRDL2 Antibody) at dilution 1/20, on the right is treated with synthetic peptide. (Original magnification: $\times 200$)

Predicted cell location: Cytoplasm

Positive control: Human colon cancer

Recommended dilution: 25-100



The image on the left is immunohistochemistry of paraffin-embedded Human colon cancer tissue using ml161558(CHRDL2 Antibody) at dilution 1/20, on the right is treated with synthetic peptide. (Original magnification: $\times 200$)

Western blotting

Predicted band size: 48 kDa

Positive control: Human fetal brain tissue

Recommended dilution: 500-2000

Gel: 8%SDS-PAGE

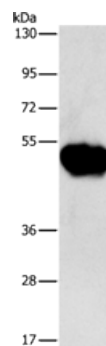
Lysate: 40 μ g

Lane: Human fetal brain tissue

Primary antibody: ml161558(CHRDL2 Antibody) at dilution 1/600

Secondary antibody: Goat anti rabbit IgG at 1/8000 dilution

Exposure time: 1 minute



ELISA

Recommended dilution: 2000-5000

联系电话: 4008-898-798, 021-61725725

联系QQ: 2881505695, 2881505696

邮箱: mlbio_cn@yeah.net

网址: www.mlbio.cn