

## Anti-CKAP4 antibody

<b>Cat. No.</b>	ml161564
<b>Package</b>	25 µl/100 µl/200 µl
<b>Storage</b>	-20°C, pH7.4 PBS, 0.05% NaN <sub>3</sub> , 40% Glycerol

### Product overview

<b>Description</b>	Anti-CKAP4 rabbit polyclonal antibody
<b>Applications</b>	ELISA, WB, IHC
<b>Immunogen</b>	Synthetic peptide of human CKAP4
<b>Reactivity</b>	Human, Mouse
<b>Content</b>	0.6 mg/ml
<b>Host species</b>	Rabbit
<b>Ig class</b>	Immunogen-specific rabbit IgG
<b>Purification</b>	Antigen affinity purification

### Target information

<b>Symbol</b>	CKAP4
<b>Full name</b>	cytoskeleton-associated protein 4
<b>Synonyms</b>	p63; CLIMP-63; ERGIC-63
<b>Swissprot</b>	Q07065

### Target Background

CKAP4 (cytoskeleton-associated protein 4), also known as p63, CLIMP-63 or ERGIC-63, is a 602 amino acid single-pass type II transmembrane protein that links the endoplasmic reticulum (ER) to the cytoskeleton. Considered a novel protein in maintaining ER morphology, CKAP4 anchors the ER to microtubules which is required for maintaining ER spatial distribution during interphase of the cell cycle. CKAP4 can be reversibly palmitoylated and phosphorylated and is a major substrate of the palmitoyl acyltransferase, ZDHHC2.

订购热线: 4008-898-798

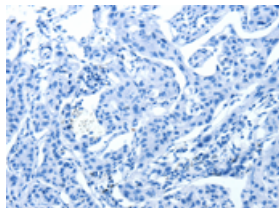
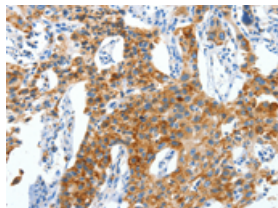
## Applications

### Immunohistochemistry

Predicted cell location: Cytoplasm

Positive control: Human lung cancer

Recommended dilution: 50-200

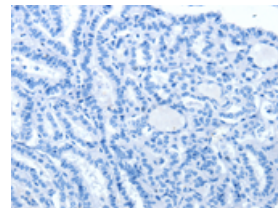
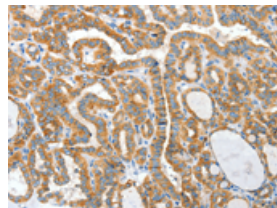


The image on the left is immunohistochemistry of paraffin-embedded Human lung cancer tissue using ml161564(CKAP4 Antibody) at dilution 1/50, on the right is treated with synthetic peptide. (Original magnification:  $\times 200$ )

Predicted cell location: Cytoplasm

Positive control: Human thyroid cancer

Recommended dilution: 50-200



The image on the left is immunohistochemistry of paraffin-embedded Human thyroid cancer tissue using ml161564(CKAP4 Antibody) at dilution 1/50, on the right is treated with synthetic peptide. (Original magnification:  $\times 200$ )

### Western blotting

Predicted band size: 66 kDa

Positive control: 293T, hepG2 and A549 cells

Recommended dilution: 1000-5000

Gel: 6%SDS-PAGE

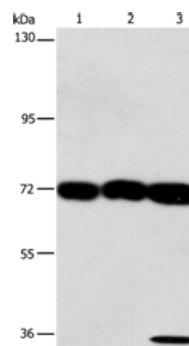
Lysate: 40  $\mu$ g

Lane 1-3: 293T cells, hepG2 cells, A549 cells

Primary antibody: ml161564(CKAP4 Antibody) at dilution 1/1250

Secondary antibody: Goat anti rabbit IgG at 1/8000 dilution

Exposure time: 30 seconds



### ELISA

Recommended dilution: 2000-10000

联系电话: 4008-898-798, 021-61725725

联系QQ: 2881505695, 2881505696

邮箱: [mlbio\\_cn@yeah.net](mailto:mlbio_cn@yeah.net)

网址: [www.mlbio.cn](http://www.mlbio.cn)