

Anti-CLIC4 antibody

Cat. No.	ml161568
Package	25 µl/100 µl/200 µl
Storage	-20°C, pH7.4 PBS, 0.05% NaN ₃ , 40% Glycerol

Product overview

Description	Anti-CLIC4 rabbit polyclonal antibody
Applications	ELISA, WB
Immunogen	Synthetic peptide of human CLIC4
Reactivity	Human, Mouse, Rat
Content	0.6 mg/ml
Host species	Rabbit
Ig class	Immunogen-specific rabbit IgG
Purification	Antigen affinity purification

Target information

Symbol	CLIC4
Full name	chloride intracellular channel 4
Synonyms	H1; huH1; p64H1; CLIC4L; MTCLIC
Swissprot	Q9Y696

Target Background

Chloride channels are a diverse group of proteins that regulate fundamental cellular processes including stabilization of cell membrane potential, transepithelial transport, maintenance of intracellular pH, and regulation of cell volume. Chloride intracellular channel 4 (CLIC4) protein, encoded by the CLIC4 gene, is a member of the p64 family; the gene is expressed in many tissues and exhibits a intracellular vesicular pattern in Panc-1 cells (pancreatic cancer cells).

订购热线: 4008-898-798

Applications

Western blotting

Predicted band size: 29 kDa

Positive control: Human normal kidney and liver tissue

Recommended dilution: 500-2000

Gel: 12% SDS-PAGE

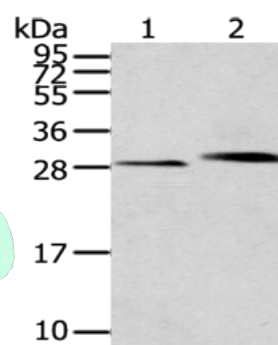
Lysate: 40 µg

Lane 1-2: Human normal kidney tissue, Human liver tissue

Primary antibody: ml161568 (CLIC4 Antibody) at dilution 1/200

Secondary antibody: Goat anti rabbit IgG at 1/8000 dilution

Exposure time: 10 seconds



ELISA

Recommended dilution: 2000-5000

联系电话: 4008-898-798, 021-61725725

联系QQ: 2881505695, 2881505696

邮箱: mlbio_cn@yeah.net

网址: www.mlbio.cn