

Anti-CFL1 antibody

Cat. No.	ml122129
Package	25 µl/100 µl/200 µl
Storage	-20°C, pH7.4 PBS, 0.05% NaN ₃ , 40% Glycerol

Product overview

Description	Anti-CFL1 rabbit polyclonal antibody
Applications	ELISA, WB
Immunogen	Fusion protein of human CFL1
Reactivity	Human, Mouse, Rat
Content	0.1 mg/ml
Host species	Rabbit
Ig class	Immunogen-specific rabbit IgG
Purification	Antigen affinity purification

Target information

Symbol	CFL1
Full name	cofilin 1 (non-muscle)
Synonyms	CFL
Swissprot	P23528

Target Background

The protein encoded by this gene can polymerize and depolymerize F-actin and G-actin in a pH-dependent manner. Increased phosphorylation of this protein by LIM kinase aids in Rho-induced reorganization of the actin cytoskeleton. Cofilin is a widely distributed intracellular actin-modulating protein that binds and depolymerizes filamentous F-actin and inhibits the polymerization of monomeric G-actin in a pH-dependent manner. It is involved in the translocation of actin-cofilin complex from cytoplasm to nucleus.

订购热线: 4008-898-798

Applications

Western blotting

Predicted band size: 19 kDa

Positive control: Raji cells

Recommended dilution: 500-2000

Gel: 10% SDS-PAGE

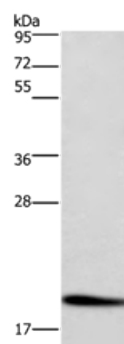
Lysate: 40 µg

Lane: Raji cells

Primary antibody: ml122129(CFL1 Antibody) at dilution 1/600

Secondary antibody: Goat anti rabbit IgG at 1/8000 dilution

Exposure time: 20 seconds



ELISA

Recommended dilution: 2000-5000

联系电话: 4008-898-798, 021-61725725

联系QQ: 2881505695, 2881505696

邮箱: mlbio_cn@yeah.net

网址: www.mlbio.cn