

## Anti-CRELD1 antibody

<b>Cat. No.</b>	ml161580
<b>Package</b>	25 µl/100 µl/200 µl
<b>Storage</b>	-20°C, pH7.4 PBS, 0.05% NaN <sub>3</sub> , 40% Glycerol

### Product overview

<b>Description</b>	Anti-CRELD1 rabbit polyclonal antibody
<b>Applications</b>	ELISA, WB, IHC
<b>Immunogen</b>	Synthetic peptide of human CRELD1
<b>Reactivity</b>	Human, Mouse, Rat
<b>Content</b>	0.8 mg/ml
<b>Host species</b>	Rabbit
<b>Ig class</b>	Immunogen-specific rabbit IgG
<b>Purification</b>	Antigen affinity purification

### Target information

<b>Symbol</b>	CRELD1
<b>Full name</b>	cysteine-rich with EGF-like domains 1
<b>Synonyms</b>	AVSD2; CIRRIIN
<b>Swissprot</b>	Q96HD1

### Target Background

This gene encodes a member of a subfamily of epidermal growth factor-related proteins. The encoded protein is characterized by a cysteine-rich with epidermal growth factor-like domain. This protein may function as a cell adhesion molecule. Mutations in this gene are the cause of atrioventricular septal defect. Alternate splicing results in multiple transcript variants.

订购热线: 4008-898-798

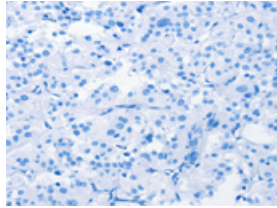
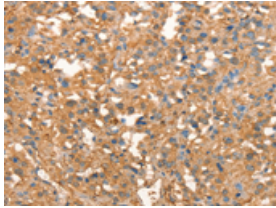
## Applications

### Immunohistochemistry

Predicted cell location: Cytoplasm

Positive control: Human thyroid cancer

Recommended dilution: 50-200

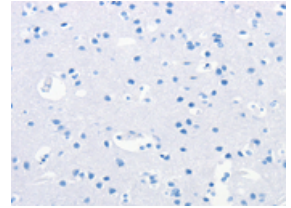
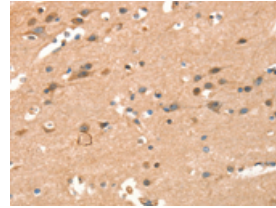


The image on the left is immunohistochemistry of paraffin-embedded Human thyroid cancer tissue using ml161580(CRELD1 Antibody) at dilution 1/40, on the right is treated with synthetic peptide. (Original magnification:  $\times 200$ )

Predicted cell location: Cytoplasm

Positive control: Human brain

Recommended dilution: 50-200



The image on the left is immunohistochemistry of paraffin-embedded Human brain tissue using ml161580(CRELD1 Antibody) at dilution 1/40, on the right is treated with synthetic peptide. (Original magnification:  $\times 200$ )

### Western blotting

Predicted band size: 45 kDa

Positive control: Mouse bladder tissue and 293T cells

Recommended dilution: 500-2000

Gel: 10% SDS-PAGE

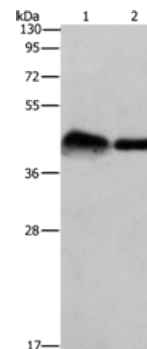
Lysate: 40  $\mu$ g

Lane 1-2: Mouse bladder tissue, 293T cells

Primary antibody: ml161580(CRELD1 Antibody) at dilution 1/930

Secondary antibody: Goat anti rabbit IgG at 1/8000 dilution

Exposure time: 5 minutes



### ELISA

Recommended dilution: 2000-5000

联系电话: 4008-898-798, 021-61725725

联系QQ: 2881505695, 2881505696

邮箱: [mlbio\\_cn@yeah.net](mailto:mlbio_cn@yeah.net)

网址: [www.mlbio.cn](http://www.mlbio.cn)