

Anti-EMD antibody

Cat. No.	ml122298
Package	25 µl/100 µl/200 µl
Storage	-20°C, pH7.4 PBS, 0.05% NaN ₃ , 40% Glycerol

Product overview

Description	Anti-EMD rabbit polyclonal antibody
Applications	ELISA, WB
Immunogen	Fusion protein of human EMD
Reactivity	Human
Content	0.4 mg/ml
Host species	Rabbit
Ig class	Immunogen-specific rabbit IgG
Purification	Antigen affinity purification

Target information

Symbol	EMD
Full name	emerin
Synonyms	STA; EDMD; LEMD5
Swissprot	P50402

Target Background

Emerin is a serine-rich nuclear membrane protein and a member of the nuclear lamina-associated protein family. It mediates membrane anchorage to the cytoskeleton. Dreifuss-Emery muscular dystrophy is an X-linked inherited degenerative myopathy resulting from mutation in the emerin gene.

订购热线: 4008-898-798

Applications

Western blotting

Predicted band size: 29 kDa

Positive control: 293T and MCF-7 cells, human hepatocellular carcinoma tissue and Raji cells, A431 and A549 cells

Recommended dilution: 1000-5000

Gel: 8%SDS-PAGE

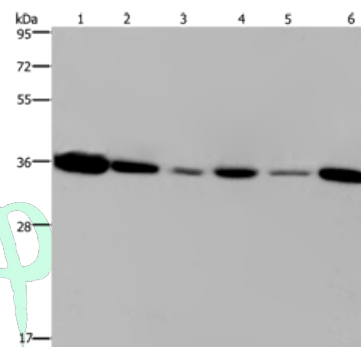
Lysate: 40 µg

Lane 1-6: 293T cells, MCF7 cells, human hepatocellular carcinoma tissue, Raji cells, A431 cells, A549 cells

Primary antibody: ml122298(EMD Antibody) at dilution 1/1200

Secondary antibody: Goat anti rabbit IgG at 1/8000 dilution

Exposure time: 5 seconds



ELISA

Recommended dilution: 2000-10000

联系电话: 4008-898-798, 021-61725725

联系QQ: 2881505695, 2881505696

邮箱: mlbio_cn@yeah.net

网址: www.mlbio.cn