

Anti-CALCRL antibody

Cat. No.	ml161587
Package	25 µl/100 µl/200 µl
Storage	-20°C, pH7.4 PBS, 0.05% NaN ₃ , 40% Glycerol

Product overview

Description	Anti-CALCRL rabbit polyclonal antibody
Applications	ELISA, WB, IHC
Immunogen	Synthetic peptide of human CALCRL
Reactivity	Human
Content	0.5 mg/ml
Host species	Rabbit
Ig class	Immunogen-specific rabbit IgG
Purification	Antigen affinity purification

Target information

Symbol	CALCRL
Full name	calcitonin receptor-like
Synonyms	CRLR; CGRPR
Swissprot	Q16602

Target Background

Calcitonin receptor-like (CALCRL), also known as the calcitonin receptor-like receptor (CRLR), is a human protein. The protein encoded by the CALCRL gene is a G protein-coupled receptor related to the calcitonin receptor. CALCRL is linked to one of three single transmembrane domain receptor activity-modifying proteins (RAMPs) that are essential for functional activity

订购热线: 4008-898-798

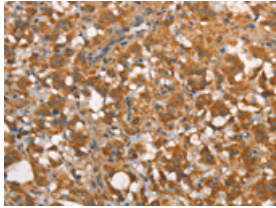
Applications

Immunohistochemistry

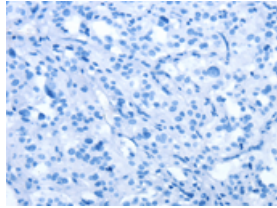
Predicted cell location: Cytoplasm

Positive control: Human thyroid cancer

Recommended dilution: 50-200



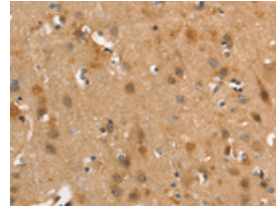
The image on the left is immunohistochemistry of paraffin-embedded Human thyroid cancer tissue using ml161587(CALCRL Antibody) at dilution 1/40, on the right is treated with synthetic peptide. (Original magnification: $\times 200$)



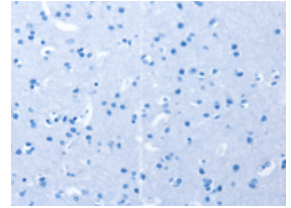
Predicted cell location: Cytoplasm

Positive control: Human brain

Recommended dilution: 50-200



The image on the left is immunohistochemistry of paraffin-embedded Human brain tissue using ml161587(CALCRL Antibody) at dilution 1/40, on the right is treated with synthetic peptide. (Original magnification: $\times 200$)



Western blotting

Predicted band size: 53 kDa

Positive control: Human lung cancer tissue

Recommended dilution: 500-2000

Gel: 8%SDS-PAGE

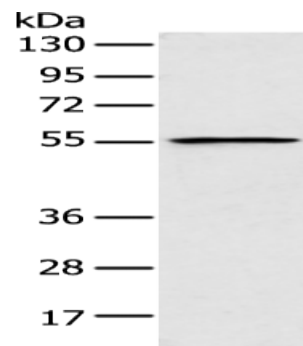
Lysate: 40 μ g

Lane: Human lung cancer tissue

Primary antibody: ml161587(CALCRL Antibody) at dilution 1/550

Secondary antibody: Goat anti rabbit IgG at 1/8000 dilution

Exposure time: 40 seconds



ELISA

Recommended dilution: 2000-5000

联系电话: 4008-898-798, 021-61725725

联系QQ: 2881505695, 2881505696

邮箱: mlbio_cn@yeah.net

网址: www.mlbio.cn