

Anti-EPSTI1 antibody

Cat. No.	ml122309
Package	25 µl/100 µl/200 µl
Storage	-20°C, pH7.4 PBS, 0.05% NaN ₃ , 40% Glycerol

Product overview

Description	Anti-EPSTI1 rabbit polyclonal antibody
Applications	ELISA, WB
Immunogen	Fusion protein of human EPSTI1
Reactivity	Human
Content	0.6 mg/ml
Host species	Rabbit
Ig class	Immunogen-specific rabbit IgG
Purification	Antigen affinity purification

Target information

Symbol	EPSTI1
Full name	epithelial stromal interaction 1
Synonyms	BRESI1
Swissprot	Q96J88

Target Background

EPSTI1 (Epithelial-stromal interaction protein 1), also known as BRESI1, is a 318 amino acid protein that is highly expressed in spleen, placenta, small intestine, liver, kidney, thymus, testis and salivary gland. Existing as three isoforms that are formed due to alternative splicing events, EPSTI1 is weakly expressed in normal breast tissue, but is heavily up-regulated in breast carcinoma, suggesting an important role for EPSTI1 in tumor formation and/or progression. Additionally, EPSTI1 is found in blood cells from systemic lupus erythematosus (SLE)-afflicted patients, implicating EPSTI1 as a potential protein involved in SLE.

订购热线: 4008-898-798

Applications

Western blotting

Predicted band size: 37 kDa

Positive control: Human placenta tissue

Recommended dilution: 1000-5000

Gel: 8%SDS-PAGE

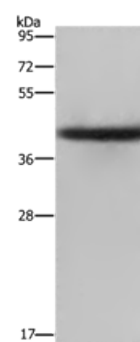
Lysate: 40 µg

Lane: Human placenta tissue

Primary antibody: ml122309(EPST11 Antibody) at dilution 1/2000

Secondary antibody: Goat anti rabbit IgG at 1/8000 dilution

Exposure time: 2 minutes



ELISA

Recommended dilution: 2000-10000

联系电话: 4008-898-798, 021-61725725

联系QQ: 2881505695, 2881505696

邮箱: mlbio_cn@yeah.net

网址: www.mlbio.cn