

Anti-CXorf36 antibody

Cat. No.	ml161597
Package	25 µl/100 µl/200 µl
Storage	-20°C, pH7.4 PBS, 0.05% NaN ₃ , 40% Glycerol

Product overview

Description	Anti-CXorf36 rabbit polyclonal antibody
Applications	ELISA, WB, IHC
Immunogen	Synthetic peptide of human CXorf36
Reactivity	Human
Content	0.4 mg/ml
Host species	Rabbit
Ig class	Immunogen-specific rabbit IgG
Purification	Antigen affinity purification

Target information

Symbol	CXorf36
Full name	chromosome X open reading frame 36
Synonyms	DIA1R; PRO3743; EPQL1862; bA435K1.1; 4930578C19Rik
Swissprot	Q9H7Y0

Target Background

Chromosome X open reading frame 36 (CXorf36) is a gene that in humans encodes a protein "hypothetical protein LOC79742". This protein has a function that is not currently very well understood. CXorf36 is shown to be expressed ubiquitously at low levels in various tissues throughout the body. It is expressed highly in the ciliary ganglion, ovary, and uterus corpus. However, highest expression is seen in the trigeminal ganglion tissue.

订购热线: 4008-898-798

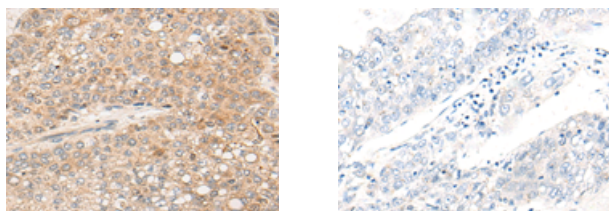
Applications

Immunohistochemistry

Predicted cell location: Cytoplasm

Positive control: Human liver cancer

Recommended dilution: 25-100



The image on the left is immunohistochemistry of paraffin-embedded Human liver cancer tissue using ml161597(CXorf36 Antibody) at dilution 1/30, on the right is treated with synthetic peptide. (Original magnification: $\times 200$)

Western blotting

Predicted band size: 49 kDa

Positive control: HeLa cell

Recommended dilution: 200-1000

Gel: 8%SDS-PAGE

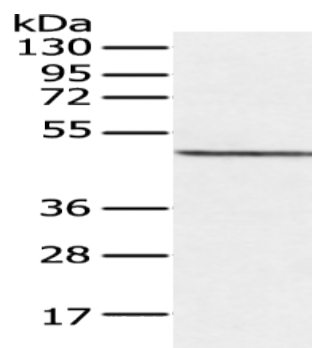
Lysate: 40 μ g

Lane: HeLa cell

Primary antibody: ml161597(CXorf36 Antibody) at dilution 1/200

Secondary antibody: Goat anti rabbit IgG at 1/8000 dilution

Exposure time: 40 seconds



ELISA

Recommended dilution: 5000-10000

联系电话: 4008-898-798, 021-61725725

联系QQ: 2881505695, 2881505696

邮箱: mlbio_cn@yeah.net

网址: www.mlbio.cn