

## Anti-HACL1 antibody

<b>Cat. No.</b>	ml122494
<b>Package</b>	25 µl/100 µl/200 µl
<b>Storage</b>	-20°C, pH7.4 PBS, 0.05% NaN <sub>3</sub> , 40% Glycerol

### Product overview

<b>Description</b>	Anti-HACL1 rabbit polyclonal antibody
<b>Applications</b>	ELISA, WB
<b>Immunogen</b>	Fusion protein of human HACL1
<b>Reactivity</b>	Human, Mouse, Rat
<b>Content</b>	0.2 mg/ml
<b>Host species</b>	Rabbit
<b>Ig class</b>	Immunogen-specific rabbit IgG
<b>Purification</b>	Antigen affinity purification

### Target information

<b>Symbol</b>	HACL1
<b>Full name</b>	2-hydroxyacyl-CoA lyase 1
<b>Synonyms</b>	HPCL; HPCL2; PHYH2; 2-HPCL
<b>Swissprot</b>	Q9UJ83

### Target Background

HACL1 (2-hydroxyacyl-CoA lyase 1) is also known as HPCL or 2-HPCL (2-hydroxyphytanoyl-CoA lyase) and is a 578 amino acid protein. HACL1 is abundantly expressed in liver, and is also expressed in kidney, heart and skeletal muscle, where it is localized to peroxisomes. HACL1 functions in lipid metabolism as well as fatty acid metabolism and is able to form homotetramers.

订购热线: 4008-898-798

## Applications

### Western blotting

Predicted band size: 64 kDa

Positive control: Human testis and mouse liver tissue, Hela and 293T cells

Recommended dilution: 200-1000

Gel: 8%SDS-PAGE

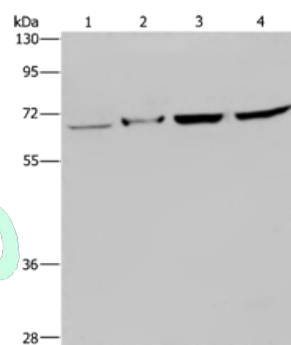
Lysate: 40 µg

Lane 1-4: Human testis tissue, mouse liver tissue, Hela cells, 293T cells

Primary antibody: ml122494(HACL1 Antibody) at dilution 1/200

Secondary antibody: Goat anti rabbit IgG at 1/8000 dilution

Exposure time: 5 minutes



### ELISA

Recommended dilution: 1000-2000

联系电话: 4008-898-798, 021-61725725

联系QQ: 2881505695, 2881505696

邮箱: [mlbio\\_cn@yeah.net](mailto:mlbio_cn@yeah.net)

网址: [www.mlbio.cn](http://www.mlbio.cn)