

Anti-KLHL9 antibody

Cat. No.	ml122593
Package	25 µl/100 µl/200 µl
Storage	-20°C, pH7.4 PBS, 0.05% NaN ₃ , 40% Glycerol

Product overview

Description	Anti-KLHL9 rabbit polyclonal antibody
Applications	ELISA, WB
Immunogen	Fusion protein of human KLHL9
Reactivity	Human, Mouse
Content	0.4 mg/ml
Host species	Rabbit
Ig class	Immunogen-specific rabbit IgG
Purification	Antigen affinity purification

Target information

Symbol	KLHL9
Full name	kelch-like family member 9
Synonyms	
Swissprot	Q9P2J3

Target Background

The BTB (Broad-Complex, Tramtrack and Bric a brac) domain, also known as the POZ (Poxvirus and Zinc finger) domain, is an N-terminal homodimerization domain that contains multiple copies of kelch repeats and/or C2H2-type zinc fingers. Proteins that contain BTB domains are thought to be involved in transcriptional regulation via control of chromatin structure and function. KLHL9 (kelch-like 9) is a 617 amino acid protein containing one BACK (BTB/kelch associated) domain, six kelch repeats and a BTB/POZ domain. KLHL9 is believed to play a role in protein ubiquitination and may function as a substrate-specific adapters of an E3 ubiquitin-protein ligase complex with CUL-3.

订购热线: 4008-898-798

Applications

Western blotting

Predicted band size: 69 kDa

Positive control: Hela, SKOV3 and Jurkat cells

Recommended dilution: 200-1000

Gel: 8%SDS-PAGE

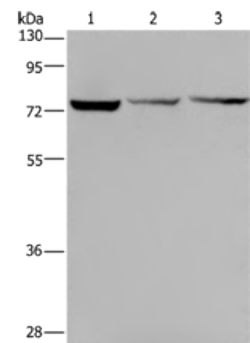
Lysate: 40 µg

Lane 1-3: Hela cells, SKOV3 cells, Jurkat cells

Primary antibody: ml122593(KLHL9 Antibody) at dilution 1/300

Secondary antibody: Goat anti rabbit IgG at 1/8000 dilution

Exposure time: 1 minute



ELISA

Recommended dilution: 1000-2000

联系电话: 4008-898-798, 021-61725725

联系QQ: 2881505695, 2881505696

邮箱: mlbio_cn@yeah.net

网址: www.mlbio.cn