

Anti-DNASE2 antibody

Cat. No.	ml161629
Package	25 µl/100 µl/200 µl
Storage	-20°C, pH7.4 PBS, 0.05% NaN ₃ , 40% Glycerol

Product overview

Description	Anti-DNASE2 rabbit polyclonal antibody
Applications	ELISA, WB
Immunogen	Synthetic peptide of human DNASE2
Reactivity	Human
Content	0.4 mg/ml
Host species	Rabbit
Ig class	Immunogen-specific rabbit IgG
Purification	Antigen affinity purification

Target information

Symbol	DNASE2
Full name	deoxyribonuclease II, lysosomal
Synonyms	DNL; DNL2; DNASE2A
Swissprot	O00115

Target Background

This gene encodes a member of the DNase family. The protein, located in the lysosome, hydrolyzes DNA under acidic conditions and mediates the breakdown of DNA during erythropoiesis and apoptosis. Two codominant alleles have been characterized, DNASE2*L (low activity) and DNASE2*H (high activity), that differ at one nucleotide in the promoter region. The DNASE2*H allele is represented in this record.

订购热线: 4008-898-798

Applications

Western blotting

Predicted band size: 40 kDa

Positive control: HEPG2 cell

Recommended dilution: 200-1000

Gel: 12% SDS-PAGE

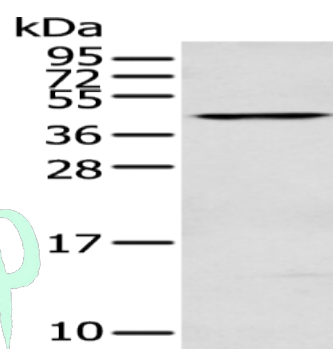
Lysate: 40 µg

Lane: HEPG2 cell

Primary antibody: ml161629(DNASE2 Antibody) at dilution 1/200

Secondary antibody: Goat anti rabbit IgG at 1/8000 dilution

Exposure time: 1MIN



ELISA

Recommended dilution: 1000-2000

联系电话: 4008-898-798, 021-61725725

联系QQ: 2881505695, 2881505696

邮箱: mlbio_cn@yeah.net

网址: www.mlbio.cn