

Anti-MTF2 antibody

Cat. No.	ml122712
Package	25 µl/100 µl/200 µl
Storage	-20°C, pH7.4 PBS, 0.05% NaN ₃ , 40% Glycerol

Product overview

Description	Anti-MTF2 rabbit polyclonal antibody
Applications	ELISA, WB
Immunogen	Fusion protein of human MTF2
Reactivity	Human, Mouse
Content	0.3 mg/ml
Host species	Rabbit
Ig class	Immunogen-specific rabbit IgG
Purification	Antigen affinity purification

Target information

Symbol	MTF2
Full name	metal response element binding transcription factor 2
Synonyms	M96; PCL2; TDRD19A; dJ976O13.2
Swissprot	Q9Y483

Target Background

MTF2(MIER2(mesoderm induction early response 1, family member 2), also known as PCL2 or M96, is a protein that in humans is encoded by the MTF2 gene. It binds to the metal-regulating-element (MRE) of metallothionein gene promoter. May be involved in the activation of MT (metallothionein) genes in response to heavy-metal ions.

订购热线: 4008-898-798

Applications

Western blotting

Predicted band size: 67 kDa

Positive control: Human testis tissue

Recommended dilution: 500-2000

Gel: 6%SDS-PAGE

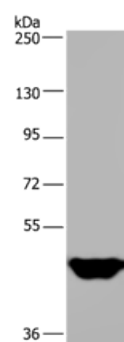
Lysate: 40 µg

Lane: Human testis tissue

Primary antibody: ml122712(MTF2 Antibody) at dilution 1/400

Secondary antibody: Goat anti rabbit IgG at 1/8000 dilution

Exposure time: 15 seconds



ELISA

Recommended dilution: 2000-5000

联系电话: 4008-898-798, 021-61725725

联系QQ: 2881505695, 2881505696

邮箱: mlbio_cn@yeah.net

网址: www.mlbio.cn