

Anti-KIRREL2 antibody

Cat. No.	ml122769
Package	25 µl/100 µl/200 µl
Storage	-20°C, pH7.4 PBS, 0.05% NaN ₃ , 40% Glycerol

Product overview

Description	Anti-KIRREL2 rabbit polyclonal antibody
Applications	ELISA, WB
Immunogen	Fusion protein of human KIRREL2
Reactivity	Human, Mouse
Content	0.2 mg/ml
Host species	Rabbit
Ig class	Immunogen-specific rabbit IgG
Purification	Antigen affinity purification

Target information

Symbol	KIRREL2
Full name	kin of IRRE like 2 (Drosophila)
Synonyms	NLG1; NEPH3; FILTRIN
Swissprot	Q6UWL6

Target Background

NEPH3 (nephrin-like protein 3), also referred to as NLG1, FILTRIN or KIRREL2 (kin of IRRE like 2), is a 708 amino acid protein that is a member of the immunoglobulin superfamily of cell adhesion molecules. NEPH3 consists of five extracellular Ig-like repeats, a transmembrane domain, several glycosylation sites and a cytoplasmic domain that has a stretch of nine conserved residues. NEPH3 localizes to the interpodocyte filtration slit in the kidney and to the Langerhans islet beta cells in the pancreas. NEPH3 is thought to be involved in the maintenance of the glomerular filtration barrier in the kidney and in pancreas development.

订购热线: 4008-898-798

Applications

Western blotting

Predicted band size: 75 kDa

Positive control: Hela cells

Recommended dilution: 200-1000

Gel: 6% SDS-PAGE

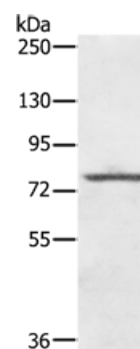
Lysate: 60 µg

Lane: Hela cells

Primary antibody: ml122769 (KIRREL2 Antibody) at dilution 1/400

Secondary antibody: Goat anti rabbit IgG at 1/8000 dilution

Exposure time: 30 seconds



ELISA

Recommended dilution: 1000-2000

联系电话: 4008-898-798, 021-61725725

联系QQ: 2881505695, 2881505696

邮箱: mlbio_cn@yeah.net

网址: www.mlbio.cn