

Anti-GPR39 antibody

Cat. No.	ml161728
Package	25 µl/100 µl/200 µl
Storage	-20°C, pH7.4 PBS, 0.05% NaN ₃ , 40% Glycerol

Product overview

Description	Anti-GPR39 rabbit polyclonal antibody
Applications	ELISA, WB
Immunogen	Synthetic peptide of human GPR39
Reactivity	Human
Content	0.7 mg/ml
Host species	Rabbit
Ig class	Immunogen-specific rabbit IgG
Purification	Antigen affinity purification

Target information

Symbol	GPR39
Full name	G protein-coupled receptor 39
Synonyms	
Swissprot	O43194

Target Background

G-protein coupled receptor 39 is a protein that in humans is encoded by the GPR39 gene. The predicted 453-amino acid GPR39 protein contains the 7 transmembrane domains characteristic of GPCRs. By sequence comparison with other GPCRs, the protein sequence of GPR39 is 27% and 32% identical to that of GSHR and neurotensin receptor-1, respectively. Northern blot analysis revealed that GPR39 is expressed widely as a 1.8- to 2-kb mRNA. A 3-kb transcript is present on Northern blots of some tissues, either in addition to the smaller mRNA or as the only hybridizing band.

订购热线: 4008-898-798

Applications

Western blotting

Predicted band size: 51 kDa

Positive control: A431 and K562 cells

Recommended dilution: 200-1000

Gel: 8%SDS-PAGE

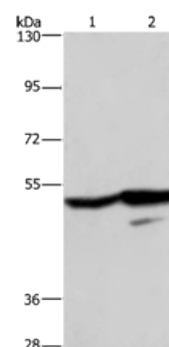
Lysate: 40 µg

Lane 1-2: A431 cells, K562 cells

Primary antibody: ml161728(GPR39 Antibody) at dilution 1/200

Secondary antibody: Goat anti rabbit IgG at 1/8000 dilution

Exposure time: 5 minutes



ELISA

Recommended dilution: 1000-2000

联系电话: 4008-898-798, 021-61725725

联系QQ: 2881505695, 2881505696

邮箱: mlbio_cn@yeah.net

网址: www.mlbio.cn