

Anti-HMGCS1 antibody

Cat. No.	ml161746
Package	25 µl/100 µl/200 µl
Storage	-20°C, pH7.4 PBS, 0.05% NaN ₃ , 40% Glycerol

Product overview

Description	Anti-HMGCS1 rabbit polyclonal antibody
Applications	ELISA, WB, IHC
Immunogen	Synthetic peptide of human HMGCS1
Reactivity	Human
Content	0.4 mg/ml
Host species	Rabbit
Ig class	Immunogen-specific rabbit IgG
Purification	Antigen affinity purification

Target information

Symbol	HMGCS1
Full name	3-hydroxy-3-methylglutaryl-CoA synthase 1 (soluble)
Synonyms	HMGCS
Swissprot	Q01581

Target Background

HMG-CoA Synthase exists as both a mitochondrial (mHMGCS) and cytoplasmic (cHMGCS) enzyme that condenses acetyl-CoA with acetoacetyl-CoA to form HMG-CoA. The HMG-CoA produced by cHMGCS is transformed into mevalonate by HMG-CoA reductase, which starts isoprenoid biosynthesis. End products of the isoprenoid pathway include cholesterol, ubiquinone, dolichol, isopentenyl adenosine and farnesyl groups. mHMGCS, together with HMG-CoA Lyase, is responsible for ketone body biosynthesis. mHMGCS is expressed in liver and kidney. Fasting, cAMP and fatty acids increase the level of transcription of mHMGCS, while feeding and insulin repress it. A regulatory element within the mHMGCS promoter confers transcriptional regulation by PPAR, RXR, COUP-TF and HNF-4.

订购热线: 4008-898-798

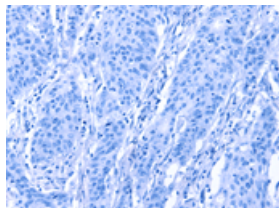
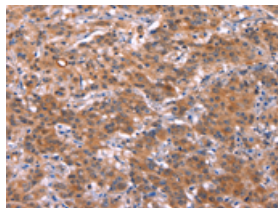
Applications

Immunohistochemistry

Predicted cell location: Cytoplasm

Positive control: Human gasrtic cancer

Recommended dilution: 50-200

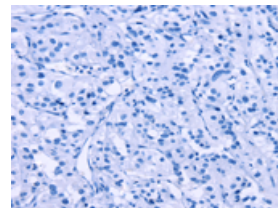
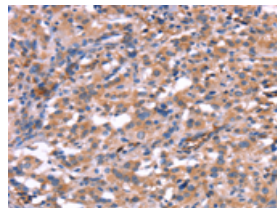


The image on the left is immunohistochemistry of paraffin-embedded Human gasrtic cancer tissue using ml161746(HMGCS1 Antibody) at dilution 1/40, on the right is treated with synthetic peptide. (Original magnification: ×200)

Predicted cell location: Cytoplasm

Positive control: Human thyroid cancer

Recommended dilution: 50-200



The image on the left is immunohistochemistry of paraffin-embedded Human thyroid cancer tissue using ml161746(HMGCS1 Antibody) at dilution 1/40, on the right is treated with synthetic peptide. (Original magnification: ×200)

Western blotting

Predicted band size: 57 kDa

Positive control: Human fetal liver tissue

Recommended dilution: 500-2000

Gel: 6%SDS-PAGE

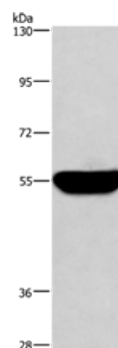
Lysate: 40 µg

Lane: Human fetal liver tissue

Primary antibody: ml161746(HMGCS1 Antibody) at dilution 1/300

Secondary antibody: Goat anti rabbit IgG at 1/8000 dilution

Exposure time: 30 seconds



ELISA

Recommended dilution: 2000-5000

联系电话: 4008-898-798, 021-61725725

联系QQ: 2881505695, 2881505696

邮箱: mlbio_cn@yeah.net

网址: www.mlbio.cn