

Anti-SETD2 antibody

Cat. No.	ml121719
Package	25 µl/100 µl/200 µl
Storage	-20°C, pH7.4 PBS, 0.05% NaN ₃ , 40% Glycerol

Product overview

Description	Anti-SETD2 rabbit polyclonal antibody
Applications	ELISA, IHC
Immunogen	Fusion protein of human SETD2
Reactivity	Human, Mouse
Content	0.2 mg/ml
Host species	Rabbit
Ig class	Immunogen-specific rabbit IgG
Purification	Antigen affinity purification

Target information

Symbol	SETD2
Full name	SET domain containing 2
Synonyms	HYPB; SET2; HIF-1; HIP-1; KMT3A; HBP231; HSPC069; p231HBP
Swissprot	Q9BYW2

Target Background

Huntington's disease (HD), a neurodegenerative disorder characterized by loss of striatal neurons, is caused by an expansion of a polyglutamine tract in the HD protein huntingtin. This gene encodes a protein belonging to a class of huntingtin interacting proteins characterized by WW motifs. This protein is a histone methyltransferase that is specific for lysine-36 of histone H3, and methylation of this residue is associated with active chromatin. This protein also contains a novel transcriptional activation domain and has been found associated with hyperphosphorylated RNA polymerase II.

订购热线: 4008-898-798

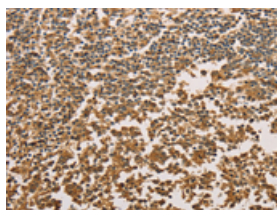
Applications

Immunohistochemistry

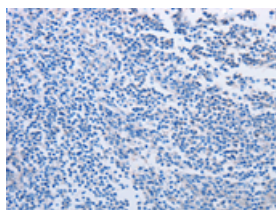
Predicted cell location: Nucleus

Positive control: Human tonsil

Recommended dilution: 50-200



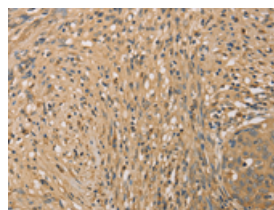
The image on the left is immunohistochemistry of paraffin-embedded Human tonsil tissue using ml121719(SETD2 Antibody) at dilution 1/40, on the right is treated with fusion protein. (Original magnification: $\times 200$)



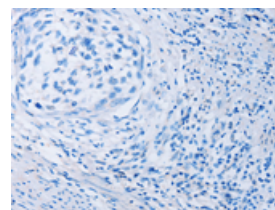
Predicted cell location: Nucleus

Positive control: Human cervical cancer

Recommended dilution: 50-200



The image on the left is immunohistochemistry of paraffin-embedded Human cervical cancer tissue using ml121719(SETD2 Antibody) at dilution 1/40, on the right is treated with fusion protein. (Original magnification: $\times 200$)



ELISA

Recommended dilution: 1000-5000

联系电话: 4008-898-798, 021-61725725

联系QQ: 2881505695, 2881505696

邮箱: mlbio_cn@yeah.net

网址: www.mlbio.cn