

Anti-NRG1 antibody

Cat. No.	ml161758
Package	25 µl/100 µl/200 µl
Storage	-20°C, pH7.4 PBS, 0.05% NaN ₃ , 40% Glycerol

Product overview

Description	Anti-NRG1 rabbit polyclonal antibody
Applications	ELISA, WB
Immunogen	Synthetic peptide of human NRG1
Reactivity	Human
Content	0.5 mg/ml
Host species	Rabbit
Ig class	Immunogen-specific rabbit IgG
Purification	Antigen affinity purification

Target information

Symbol	NRG1
Full name	neuregulin 1
Synonyms	GGF; HGL; HRG; NDF; ARIA; GGF2; HRG1; HRGA; SMDF; MST131
Swissprot	Q02297

Target Background

The protein encoded by this gene was originally identified as a 44-kD glycoprotein that interacts with the NEU/ERBB2 receptor tyrosine kinase to increase its phosphorylation on tyrosine residues. This protein is a signaling protein that mediates cell-cell interactions and plays critical roles in the growth and development of multiple organ systems. It is known that an extraordinary variety of different isoforms are produced from this gene through alternative promoter usage and splicing. These isoforms are tissue-specifically expressed and differ significantly in their structure, and thereby these isoforms are classified into types I, II, III, IV, V and VI. The gene dysregulation has been linked to diseases such as cancer, schizophrenia and bipolar disorder (BPD).

订购热线: 4008-898-798

Applications

Western blotting

Predicted band size: 70 kDa

Positive control: HeLa and A549 cells

Recommended dilution: 200-1000

Gel: 6% SDS-PAGE

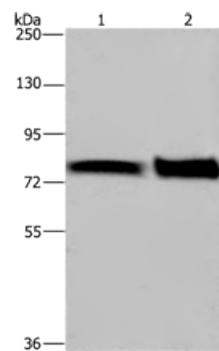
Lysate: 40 µg

Lane 1-2: HeLa cells, A549 cells

Primary antibody: ml161758(NRG1 Antibody) at dilution 1/200

Secondary antibody: Goat anti rabbit IgG at 1/8000 dilution

Exposure time: 10 minutes



ELISA

Recommended dilution: 1000-2000

联系电话: 4008-898-798, 021-61725725

联系QQ: 2881505695, 2881505696

邮箱: mlbio_cn@yeah.net

网址: www.mlbio.cn