

Anti-PAGE1 antibody

Cat. No.	ml122829
Package	25 µl/100 µl/200 µl
Storage	-20°C, pH7.4 PBS, 0.05% NaN ₃ , 40% Glycerol

Product overview

Description	Anti-PAGE1 rabbit polyclonal antibody
Applications	ELISA, WB
Immunogen	Fusion protein of human PAGE1
Reactivity	Human
Content	0.2 mg/ml
Host species	Rabbit
Ig class	Immunogen-specific rabbit IgG
Purification	Antigen affinity purification

Target information

Symbol	PAGE1
Full name	P antigen family, member 1 (prostate associated)
Synonyms	AL5; CT16.3; GAGE-9; GAGEB1; PAGE-1
Swissprot	O75459

Target Background

This gene belongs to a family of genes that are expressed in a variety of tumors but not in normal tissues, except for the testis. Unlike the other gene family members, this gene does not encode an antigenic peptide. Nothing is presently known about the function of this protein.

订购热线: 4008-898-798

Applications

Western blotting

Predicted band size: 16 kDa

Positive control: Human placenta tissue

Recommended dilution: 200-1000

Gel: 12%SDS-PAGE

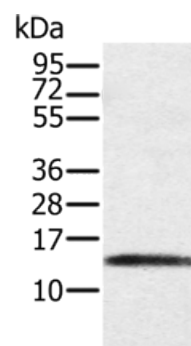
Lysate: 40 µg

Lane: Human placenta tissue

Primary antibody: ml122829(PAGE1 Antibody) at dilution 1/200

Secondary antibody: Goat anti rabbit IgG at 1/8000 dilution

Exposure time: 3 minutes



ELISA

Recommended dilution: 1000-2000

联系电话: 4008-898-798, 021-61725725

联系QQ: 2881505695, 2881505696

邮箱: mlbio_cn@yeah.net

网址: www.mlbio.cn