

## Anti-PDGFR antibody

<b>Cat. No.</b>	ml122851
<b>Package</b>	25 µl/100 µl/200 µl
<b>Storage</b>	-20°C, pH7.4 PBS, 0.05% NaN <sub>3</sub> , 40% Glycerol

### Product overview

<b>Description</b>	Anti-PDGFR rabbit polyclonal antibody
<b>Applications</b>	ELISA, WB
<b>Immunogen</b>	Fusion protein of human PDGFR
<b>Reactivity</b>	Human, Mouse, Rat
<b>Content</b>	0.3 mg/ml
<b>Host species</b>	Rabbit
<b>Ig class</b>	Immunogen-specific rabbit IgG
<b>Purification</b>	Antigen affinity purification

### Target information

<b>Symbol</b>	PDGFR
<b>Full name</b>	platelet-derived growth factor receptor-like
<b>Synonyms</b>	PDGRL; PRLTS
<b>Swissprot</b>	Q15198

### Target Background

This gene encodes a protein with significant sequence similarity to the ligand binding domain of platelet-derived growth factor receptor beta. Mutations in this gene, or deletion of a chromosomal segment containing this gene, are associated with sporadic hepatocellular carcinomas, colorectal cancers, and non-small cell lung cancers. This suggests this gene product may function as a tumor suppressor.

订购热线: 4008-898-798

#### Applications

##### Western blotting

Predicted band size: 42 kDa

Positive control: HeLa and Iovo cells

Recommended dilution: 500-2000

Gel: 8% SDS-PAGE

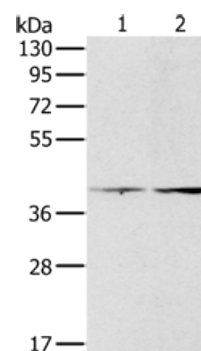
Lysate: 40 µg

Lane 1-2: HeLa cells, Iovo cells

Primary antibody: ml122851 (PDGFRL Antibody) at dilution 1/400

Secondary antibody: Goat anti rabbit IgG at 1/8000 dilution

Exposure time: 10 minutes



##### ELISA

Recommended dilution: 2000-5000

联系电话: 4008-898-798, 021-61725725

联系QQ: 2881505695, 2881505696

邮箱: [mlbio\\_cn@yeah.net](mailto:mlbio_cn@yeah.net)

网址: [www.mlbio.cn](http://www.mlbio.cn)