

Anti-PYGM antibody

Cat. No.	ml122955
Package	25 µl/100 µl/200 µl
Storage	-20°C, pH7.4 PBS, 0.05% NaN ₃ , 40% Glycerol

Product overview

Description	Anti-PYGM rabbit polyclonal antibody
Applications	ELISA, WB
Immunogen	Fusion protein of human PYGM
Reactivity	Human, Mouse, Rat
Content	0.3 mg/ml
Host species	Rabbit
Ig class	Immunogen-specific rabbit IgG
Purification	Antigen affinity purification

Target information

Symbol	PYGM
Full name	phosphorylase, glycogen, muscle
Synonyms	
Swissprot	P11217

Target Background

This gene encodes a muscle enzyme involved in glycogenolysis. Highly similar enzymes encoded by different genes are found in liver and brain. Mutations in this gene are associated with McArdle disease (myophosphorylase deficiency), a glycogen storage disease of muscle. Alternative splicing results in multiple transcript variants.

订购热线: 4008-898-798

Applications

Western blotting

Predicted band size: 97 kDa

Positive control: Human fetal muscle tissue, mouse brain and heart tissue

Recommended dilution: 200-1000

Gel: 8%SDS-PAGE

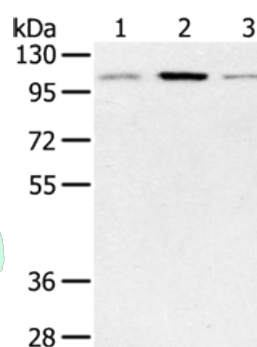
Lysate: 40 µg

Lane 1-3: Human fetal muscle tissue, mouse brain tissue,
Mouse heart tissue

Primary antibody: ml122955(PYGM Antibody) at dilution
1/450

Secondary antibody: Goat anti rabbit IgG at 1/8000 dilution

Exposure time: 40 seconds



ELISA

Recommended dilution: 1000-2000

联系电话: 4008-898-798, 021-61725725

联系QQ: 2881505695, 2881505696

邮箱: mlbio_cn@yeah.net

网址: www.mlbio.cn