

Anti-RAD17 antibody

Cat. No.	ml122966
Package	25 µl/100 µl/200 µl
Storage	-20°C, pH7.4 PBS, 0.05% NaN ₃ , 40% Glycerol

Product overview

Description	Anti-RAD17 rabbit polyclonal antibody
Applications	ELISA, WB
Immunogen	Fusion protein of human RAD17
Reactivity	Human, Mouse
Content	0.4 mg/ml
Host species	Rabbit
Ig class	Immunogen-specific rabbit IgG
Purification	Antigen affinity purification

Target information

Symbol	RAD17
Full name	RAD17 homolog (S. pombe)
Synonyms	CCYC; R24L; RAD24; HRAD17; RAD17SP
Swissprot	O75943

Target Background

The protein encoded by this gene is highly similar to the gene product of *Schizosaccharomyces pombe* rad17, a cell cycle checkpoint gene required for cell cycle arrest and DNA damage repair in response to DNA damage. This protein shares strong similarity with DNA replication factor C (RFC), and can form a complex with RFCs. This protein binds to chromatin prior to DNA damage and is phosphorylated by the checkpoint kinase ATR following damage.

订购热线: 4008-898-798

Applications

Western blotting

Predicted band size: 77 kDa

Positive control: Lovo cells

Recommended dilution: 200-1000

Gel: 8%SDS-PAGE

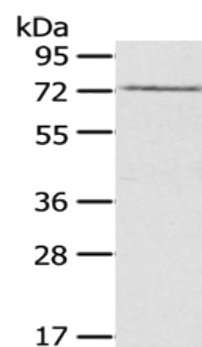
Lysate: 40 µg

Lane: Lovo cells

Primary antibody: ml122966(RAD17 Antibody) at dilution 1/200

Secondary antibody: Goat anti rabbit IgG at 1/8000 dilution

Exposure time: 1 minute



ELISA

Recommended dilution: 1000-2000

联系电话: 4008-898-798, 021-61725725

联系QQ: 2881505695, 2881505696

邮箱: mlbio_cn@yeah.net

网址: www.mlbio.cn