

## Anti-DNAJB1 antibody

<b>Cat. No.</b>	ml121744
<b>Package</b>	25 µl/100 µl/200 µl
<b>Storage</b>	-20°C, pH7.4 PBS, 0.05% NaN <sub>3</sub> , 40% Glycerol

### Product overview

<b>Description</b>	Anti-DNAJB1 rabbit polyclonal antibody
<b>Applications</b>	ELISA, IHC
<b>Immunogen</b>	Fusion protein of human DNAJB1
<b>Reactivity</b>	Human, Mouse
<b>Content</b>	0.2 mg/ml
<b>Host species</b>	Rabbit
<b>Ig class</b>	Immunogen-specific rabbit IgG
<b>Purification</b>	Antigen affinity purification

### Target information

<b>Symbol</b>	DNAJB1
<b>Full name</b>	DnaJ (Hsp40) homolog, subfamily B, member 1
<b>Synonyms</b>	Hdj1; Sis1; HSPF1; Hsp40; RSPH16B
<b>Swissprot</b>	P25685

### Target Background

DnaJ homolog subfamily B member 1 is a protein that in humans is encoded by the DNAJB1 gene. Heat shock protein 40 (HSP 40) family proteins bind to HSP 70 through their J-domain and regulate the function of HSP 70 by stimulating HSP 70 ATPase activity. HSP 40, also known as DnaJ, functions together with DnaK (HSP 70) and GrpE as a molecular chaperone, involving them in assembly and disassembly of protein complexes, protein folding, renaturation of denatured proteins, prevention of protein aggregation and protein export. HSP 40 stimulates the association between HSC 70 and HIP and translocates rapidly from the cytoplasm to the nuclei, and especially to the nucleoli, upon heat shock.

订购热线: 4008-898-798

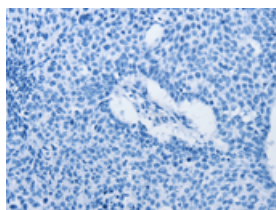
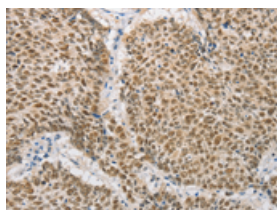
## Applications

### Immunohistochemistry

Predicted cell location: Cytoplasm and Nucleus

Positive control: Human lung cancer

Recommended dilution: 25-100

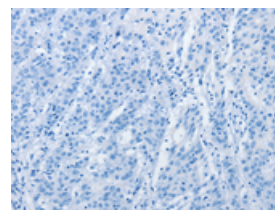
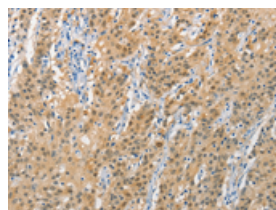


The image on the left is immunohistochemistry of paraffin-embedded Human lung cancer tissue using ml121744(DNAJB1 Antibody) at dilution 1/20, on the right is treated with fusion protein. (Original magnification:  $\times 200$ )

Predicted cell location: Cytoplasm and Nucleus

Positive control: Human gastric cancer

Recommended dilution: 25-100



The image on the left is immunohistochemistry of paraffin-embedded Human gastric cancer tissue using ml121744(DNAJB1 Antibody) at dilution 1/20, on the right is treated with fusion protein. (Original magnification:  $\times 200$ )

### ELISA

Recommended dilution: 2000-5000

联系电话: 4008-898-798, 021-61725725

联系QQ: 2881505695, 2881505696

邮箱: [mlbio\\_cn@yeah.net](mailto:mlbio_cn@yeah.net)

网址: [www.mlbio.cn](http://www.mlbio.cn)