

Anti-IPO9 antibody

| | |
|-----------------|---|
| Cat. No. | ml161793 |
| Package | 25 µl/100 µl/200 µl |
| Storage | -20°C, pH7.4 PBS, 0.05% NaN ₃ , 40% Glycerol |

Product overview

| | |
|---------------------|--------------------------------------|
| Description | Anti-IPO9 rabbit polyclonal antibody |
| Applications | ELISA, WB, IHC |
| Immunogen | Synthetic peptide of human IPO9 |
| Reactivity | Human, Mouse |
| Content | 0.8 mg/ml |
| Host species | Rabbit |
| Ig class | Immunogen-specific rabbit IgG |
| Purification | Antigen affinity purification |

Target information

| | |
|------------------|------------|
| Symbol | IPO9 |
| Full name | importin 9 |
| Synonyms | Imp9 |
| Swissprot | Q96P70 |

Target Background

Importin-9, also known as Imp9 or IPO9, is a 1,041 amino acid protein that contains one importin N-terminal domain and belongs to the Importin- β family. Localized to both the nucleus and the cytoplasm, Importin-9 functions as a nuclear transport receptor that mediates the docking of the Importin complex to the nuclear pore complex (NPC). Importin-9 mediates nuclear import of H2B histone, Ribosomal Protein S7 and Ribosomal Protein L18A. The gene encoding Importin-9 is located on human chromosome 1, the largest human chromosome that spans about 260 million base pairs and makes up 8% of the human genome.

订购热线: 4008-898-798

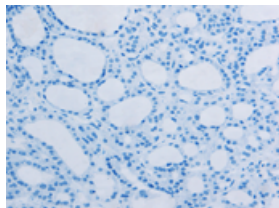
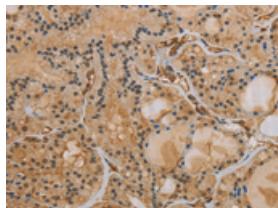
Applications

Immunohistochemistry

Predicted cell location: Cytoplasm

Positive control: Human thyroid cancer

Recommended dilution: 50-200

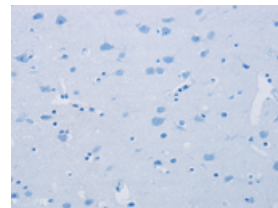
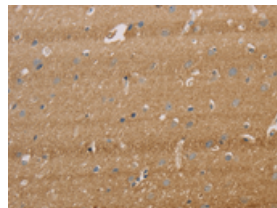


The image on the left is immunohistochemistry of paraffin-embedded Human thyroid cancer tissue using ml161793(IPO9 Antibody) at dilution 1/40, on the right is treated with synthetic peptide. (Original magnification: $\times 200$)

Predicted cell location: Cytoplasm

Positive control: Human brain

Recommended dilution: 50-200



The image on the left is immunohistochemistry of paraffin-embedded Human brain tissue using ml161793(IPO9 Antibody) at dilution 1/40, on the right is treated with synthetic peptide. (Original magnification: $\times 200$)

Western blotting

Predicted band size: 116 kDa

Positive control: Human fetal brain tissue and Hela cells

Recommended dilution: 200-1000

Gel: 6%SDS-PAGE

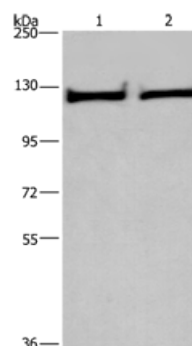
Lysate: 40 μ g

Lane 1-2: Human fetal brain tissue, Hela cells

Primary antibody: ml161793(IPO9 Antibody) at dilution 1/200

Secondary antibody: Goat anti rabbit IgG at 1/8000 dilution

Exposure time: 30 seconds



ELISA

Recommended dilution: 1000-2000

联系电话: 4008-898-798, 021-61725725

联系QQ: 2881505695, 2881505696

邮箱: mlbio_cn@yeah.net

网址: www.mlbio.cn