

## Anti-ITGA11 antibody

<b>Cat. No.</b>	ml161797
<b>Package</b>	25 µl/100 µl/200 µl
<b>Storage</b>	-20°C, pH7.4 PBS, 0.05% NaN <sub>3</sub> , 40% Glycerol

### Product overview

<b>Description</b>	Anti-ITGA11 rabbit polyclonal antibody
<b>Applications</b>	ELISA, WB, IHC
<b>Immunogen</b>	Synthetic peptide of human ITGA11
<b>Reactivity</b>	Human, Mouse
<b>Content</b>	1.6 mg/ml
<b>Host species</b>	Rabbit
<b>Ig class</b>	Immunogen-specific rabbit IgG
<b>Purification</b>	Antigen affinity purification

### Target information

<b>Symbol</b>	ITGA11
<b>Full name</b>	integrin, alpha 11
<b>Synonyms</b>	HsT18964; RP11-709B3.2
<b>Swissprot</b>	Q9UKX5

### Target Background

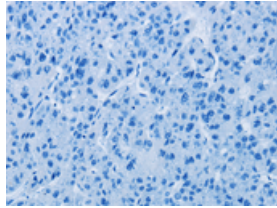
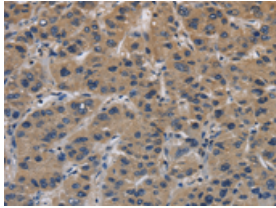
This gene encodes an alpha integrin. Integrins are heterodimeric integral membrane proteins composed of an alpha chain and a beta chain. This protein contains an I domain, is expressed in muscle tissue, dimerizes with beta 1 integrin in vitro, and appears to bind collagen in this form. Therefore, the protein may be involved in attaching muscle tissue to the extracellular matrix. Alternative transcriptional splice variants have been found for this gene, but their biological validity is not determined.

订购热线: 4008-898-798

#### Applications

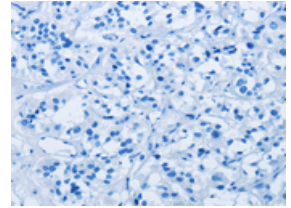
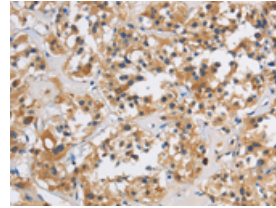
##### Immunohistochemistry

Predicted cell location: Cytoplasm  
Positive control: Human liver cancer  
Recommended dilution: 50-200



The image on the left is immunohistochemistry of paraffin-embedded Human liver cancer tissue using ml161797(ITGA11 Antibody) at dilution 1/40, on the right is treated with synthetic peptide. (Original magnification:  $\times 200$ )

Predicted cell location: Cytoplasm  
Positive control: Human thyroid cancer  
Recommended dilution: 50-200



The image on the left is immunohistochemistry of paraffin-embedded Human thyroid cancer tissue using ml161797(ITGA11 Antibody) at dilution 1/40, on the right is treated with synthetic peptide. (Original magnification:  $\times 200$ )

##### Western blotting

Predicted band size: 133 kDa  
Positive control: Mouse skeletal muscle tissue  
Recommended dilution: 200-1000

Gel: 6% SDS-PAGE

Lysate: 40  $\mu$ g

Lane: Mouse skeletal muscle tissue

Primary antibody: ml161797(ITGA11 Antibody) at dilution 1/200

Secondary antibody: Goat anti rabbit IgG at 1/8000 dilution

Exposure time: 3 minutes



##### ELISA

Recommended dilution: 1000-2000

联系电话: 4008-898-798, 021-61725725

联系QQ: 2881505695, 2881505696

邮箱: [mlbio\\_cn@yeah.net](mailto:mlbio_cn@yeah.net)

网址: [www.mlbio.cn](http://www.mlbio.cn)