

Anti-PIN4 antibody

| | |
|-----------------|---|
| Cat. No. | ml123762 |
| Package | 25 µl/100 µl/200 µl |
| Storage | -20°C, pH7.4 PBS, 0.05% NaN ₃ , 40% Glycerol |

Product overview

| | |
|---------------------|--------------------------------------|
| Description | Anti-PIN4 rabbit polyclonal antibody |
| Applications | ELISA, WB |
| Immunogen | Full length fusion protein |
| Reactivity | Human, Mouse |
| Content | 0.7 mg/ml |
| Host species | Rabbit |
| Ig class | Immunogen-specific rabbit IgG |
| Purification | Antigen affinity purification |

Target information

| | |
|------------------|--|
| Symbol | PIN4 |
| Full name | peptidylprolyl cis/trans isomerase, NIMA-interacting 4 |
| Synonyms | EPVH; PAR14; PAR17 |
| Swissprot | Q9Y237 |

Target Background

This gene encodes a member of the parvulin subfamily of the peptidyl-prolyl cis/trans isomerase protein family. The encoded protein catalyzes the isomerization of peptidylprolyl bonds, and may play a role in the cell cycle, chromatin remodeling, and/or ribosome biogenesis. The encoded protein may play an additional role in the mitochondria.

订购热线: 4008-898-798

Applications

Western blotting

Predicted band size: 14 kDa

Positive control: 293T cell and Human fetal muscle tissue

Recommended dilution: 200-1000

Gel: 12% SDS-PAGE

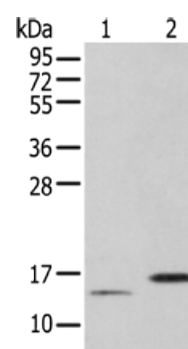
Lysate: 40 µg

Lane 1-2: 293T cell and Human fetal muscle tissue

Primary antibody: ml123762(PIN4 Antibody) at dilution 1/250

Secondary antibody: Goat anti rabbit IgG at 1/8000 dilution

Exposure time: 3 seconds



ELISA

Recommended dilution: 5000-10000

联系电话: 4008-898-798, 021-61725725

联系QQ: 2881505695, 2881505696

邮箱: mlbio_cn@yeah.net

网址: www.mlbio.cn