

Anti-CERS3 antibody

Cat. No.	ml161848
Package	25 µl/100 µl/200 µl
Storage	-20°C, pH7.4 PBS, 0.05% NaN ₃ , 40% Glycerol

Product overview

Description	Anti-CERS3 rabbit polyclonal antibody
Applications	ELISA, WB
Immunogen	Synthetic peptide of human CERS3
Reactivity	Human
Content	0.4 mg/ml
Host species	Rabbit
Ig class	Immunogen-specific rabbit IgG
Purification	Antigen affinity purification

Target information

Symbol	CERS3
Full name	ceramide synthase 3
Synonyms	ARC19; LASS3
Swissprot	Q8IU89

Target Background

LASS3 is a 383 amino acid membrane protein almost exclusively expressed in testis, suggesting that LASS3 plays an important role in proper testis function. It is also weakly expressed in skin. A transcriptional variant of LASS3 cDNA exists and can result in the production of a 419 amino acid protein (LASS3-long). LASS3 overproduction raises the level of several ceramide species, including C18:0- and C24:0-ceramides.

订购热线: 4008-898-798

Applications

Western blotting

Predicted band size: 46 kDa

Positive control: TM4 cells

Recommended dilution: 200-1000

Gel: 8%SDS-PAGE

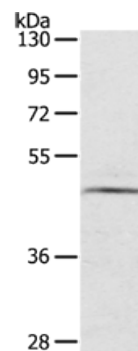
Lysate: 40 µg

Lane: TM4 cells

Primary antibody: ml161848(CERS3 Antibody) at dilution 1/200

Secondary antibody: Goat anti rabbit IgG at 1/8000 dilution

Exposure time: 3 minutes



ELISA

Recommended dilution: 1000-2000

联系电话: 4008-898-798, 021-61725725

联系QQ: 2881505695, 2881505696

邮箱: mlbio_cn@yeah.net

网址: www.mlbio.cn