

## Anti-ABHD14B antibody

<b>Cat. No.</b>	ml123870
<b>Package</b>	25 µl/100 µl/200 µl
<b>Storage</b>	-20°C, pH7.4 PBS, 0.05% NaN <sub>3</sub> , 40% Glycerol

### Product overview

<b>Description</b>	Anti-ABHD14B rabbit polyclonal antibody
<b>Applications</b>	ELISA, WB
<b>Immunogen</b>	Full length fusion protein
<b>Reactivity</b>	Human, Mouse, Rat
<b>Content</b>	1 mg/ml
<b>Host species</b>	Rabbit
<b>Ig class</b>	Immunogen-specific rabbit IgG
<b>Purification</b>	Antigen affinity purification

### Target information

<b>Symbol</b>	ABHD14B
<b>Full name</b>	abhydrolase domain containing 14B
<b>Synonyms</b>	CIB; HEL-S-299
<b>Swissprot</b>	Q96IU4

### Target Background

The Ab hydrolase domain containing (ABHD) gene subfamily is comprised of 15 mostly uncharacterized members. Most of which utilize a serine nucleophile to form the G-X-S-X-G nucleophile elbow. ABHD1 plays a role in metabolizing smoking xenobiotics. ABHD2 participates in the development of atherosclerosis. ABHD4 is involved in an alternative synthesis pathway of NAE. Mutations in ABHD5 contribute to Chanarin-Dorfman syndrome. ABDH6 may play a role in nervous system metabolism and signaling. ABHD14B is a 210 amino acid protein that localizes to both the cytoplasm and the nucleus where it exists as two alternatively spliced isoforms.

订购热线: 4008-898-798

#### Applications

##### Western blotting

Predicted band size: 22 kDa

Positive control: Human testis tissue lysate

Recommended dilution: 200-1000

Gel: 12% SDS-PAGE

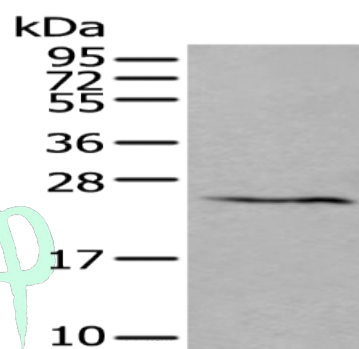
Lysate: 40 µg

Lane: Human testis tissue lysate

Primary antibody: ml123870 (ABHD14B Antibody) at dilution 1/250

Secondary antibody: Goat anti rabbit IgG at 1/8000 dilution

Exposure time: 30 seconds



##### ELISA

Recommended dilution: 5000-10000

联系电话: 4008-898-798, 021-61725725

联系QQ: 2881505695, 2881505696

邮箱: [mlbio\\_cn@yeah.net](mailto:mlbio_cn@yeah.net)

网址: [www.mlbio.cn](http://www.mlbio.cn)