

Anti-MAGEF1 antibody

| | |
|-----------------|---|
| Cat. No. | ml161883 |
| Package | 25 µl/100 µl/200 µl |
| Storage | -20°C, pH7.4 PBS, 0.05% NaN ₃ , 40% Glycerol |

Product overview

| | |
|---------------------|--|
| Description | Anti-MAGEF1 rabbit polyclonal antibody |
| Applications | ELISA, WB, IHC |
| Immunogen | Synthetic peptide of human MAGEF1 |
| Reactivity | Human |
| Content | 0.7 mg/ml |
| Host species | Rabbit |
| Ig class | Immunogen-specific rabbit IgG |
| Purification | Antigen affinity purification |

Target information

| | |
|------------------|------------------------------|
| Symbol | MAGEF1 |
| Full name | melanoma antigen family F, 1 |
| Synonyms | |
| Swissprot | Q9HAY2 |

Target Background

This intronless gene encodes a member of the MAGE superfamily. It is ubiquitously expressed in normal tissues and in tumor cells. This gene includes a microsatellite repeat in the coding region.

订购热线: 4008-898-798

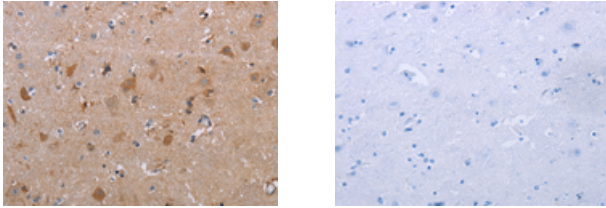
Applications

Immunohistochemistry

Predicted cell location: Cytoplasm and Nucleus

Positive control: Human brain

Recommended dilution: 25-100



The image on the left is immunohistochemistry of paraffin-embedded Human brain tissue using ml161883(MAGEF1 Antibody) at dilution 1/30, on the right is treated with synthetic peptide. (Original magnification: $\times 200$)

Western blotting

Predicted band size: 35 kDa

Positive control: A549 cells and human fetal liver tissue

Recommended dilution: 500-2000

Gel: 8%SDS-PAGE

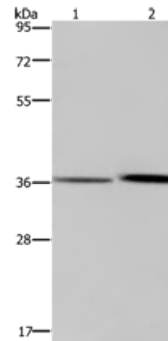
Lysate: 40 μ g

Lane 1-2: A549 cells, human fetal liver tissue

Primary antibody: ml161883(MAGEF1 Antibody) at dilution 1/300

Secondary antibody: Goat anti rabbit IgG at 1/8000 dilution

Exposure time: 1 minute



ELISA

Recommended dilution: 1000-2000

联系电话: 4008-898-798, 021-61725725

联系QQ: 2881505695, 2881505696

邮箱: mlbio_cn@yeah.net

网址: www.mlbio.cn