

## Anti-FKBP7 antibody

<b>Cat. No.</b>	ml123897
<b>Package</b>	25 µl/100 µl/200 µl
<b>Storage</b>	-20°C, pH7.4 PBS, 0.05% NaN <sub>3</sub> , 40% Glycerol

### Product overview

<b>Description</b>	Anti-FKBP7 rabbit polyclonal antibody
<b>Applications</b>	ELISA, WB
<b>Immunogen</b>	Fusion protein of human FKBP7
<b>Reactivity</b>	Human, Mouse
<b>Content</b>	0.5 mg/ml
<b>Host species</b>	Rabbit
<b>Ig class</b>	Immunogen-specific rabbit IgG
<b>Purification</b>	Antigen affinity purification

### Target information

<b>Symbol</b>	FKBP7
<b>Full name</b>	FK506 binding protein 7
<b>Synonyms</b>	FKBP23; PPlase
<b>Swissprot</b>	Q9Y680

### Target Background

The protein encoded by this gene belongs to the FKBP-type peptidyl-prolyl cis/trans isomerase (PPlase) family. Members of this family exhibit PPlase activity and function as molecular chaperones. A similar protein in mouse is located in the endoplasmic reticulum and binds calcium.

订购热线: 4008-898-798

#### Applications

##### Western blotting

Predicted band size: 30 kDa

Positive control: Hepg2, Hela, A549 cell, Human fetal liver tissue, 293T cell, Human heart tissue

Recommended dilution: 200-1000

Gel: 12%SDS-PAGE

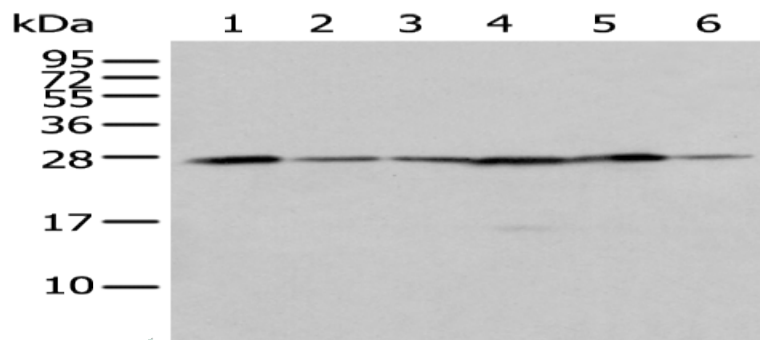
Lysate: 40 µg

Lane 1-6: Hepg2, Hela, A549 cell, Human fetal liver tissue, 293T cell, Human heart tissue

Primary antibody: ml123897(FKBP7 Antibody) at dilution 1/200

Secondary antibody: Goat anti rabbit IgG at 1/8000 dilution

Exposure time: 3 seconds



##### ELISA

Recommended dilution: 5000-10000

联系电话: 4008-898-798, 021-61725725

联系QQ: 2881505695, 2881505696

邮箱: [mlbio\\_cn@yeah.net](mailto:mlbio_cn@yeah.net)

网址: [www.mlbio.cn](http://www.mlbio.cn)

**mlbio** 酶联生物  
Good elisakit producers  
订购热线: 4008-898-798