

Anti-CANT1 antibody

Cat. No.	ml124400
Package	25 µl/100 µl/200 µl
Storage	-20°C, pH7.4 PBS, 0.05% NaN ₃ , 40% Glycerol

Product overview

Description	Anti-CANT1 rabbit polyclonal antibody
Applications	ELISA, WB
Immunogen	Fusion protein of human CANT1
Reactivity	Human, Mouse, Rat
Content	0.7 mg/ml
Host species	Rabbit
Ig class	Immunogen-specific rabbit IgG
Purification	Antigen affinity purification

Target information

Symbol	CANT1
Full name	calcium activated nucleotidase 1
Synonyms	DBQD; DBQD1; SCAN1; SHAPY; SCAN-1
Swissprot	Q8WVQ1

Target Background

This protein encoded by this gene belongs to the apyrase family. It functions as a calcium-dependent nucleotidase with a preference for UDP. Mutations in this gene are associated with Desbuquois dysplasia with hand anomalies. Alternatively spliced transcript variants have been noted for this gene.

订购热线: 4008-898-798

Applications

Western blotting

Predicted band size: 45 kDa

Positive control: Hela and A375 cell lysates

Recommended dilution: 500-2000

Gel: 8% SDS-PAGE

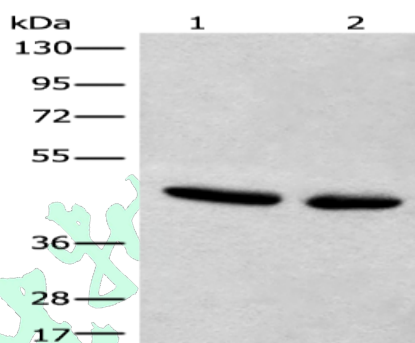
Lysate: 40 µg

Lane 1-2: Hela and A375 cell lysates

Primary antibody: ml124400 (CANT1 Antibody) at dilution 1/500

Secondary antibody: Goat anti rabbit IgG at 1/8000 dilution

Exposure time: 3 seconds



ELISA

Recommended dilution: 5000-10000

联系电话: 4008-898-798, 021-61725725

联系QQ: 2881505695, 2881505696

邮箱: mlbio_cn@yeah.net

网址: www.mlbio.cn