

## Anti-CCDC102B antibody

|                 |   |
|-----------------|---|
| <b>Cat. No.</b> | ml124430  |
| <b>Package</b>  | 25 µl/100 µl/200 µl                                     |
| <b>Storage</b>  | -20°C, pH7.4 PBS, 0.05% NaN <sub>3</sub> , 40% Glycerol |

### Product overview

|                     |  |
|---------------------|--|
| <b>Description</b>  | Anti-CCDC102B rabbit polyclonal antibody |
| <b>Applications</b> | ELISA, WB                                |
| <b>Immunogen</b>    | Full length fusion protein               |
| <b>Reactivity</b>   | Human                                    |
| <b>Content</b>      | 0.4 mg/ml                                |
| <b>Host species</b> | Rabbit                                   |
| <b>Ig class</b>     | Immunogen-specific rabbit IgG            |
| <b>Purification</b> | Antigen affinity purification            |

### Target information

|                  |                                    |
|------------------|------------------------------------|
| <b>Symbol</b>    | CCDC102B                           |
| <b>Full name</b> | coiled-coil domain containing 102B |
| <b>Synonyms</b>  | AN; ACY1L; HsT1731; C18orf14       |
| <b>Swissprot</b> | Q68D86                             |

### Target Background

CCDC102B (coiled-coil domain containing 102B), also known as AN, ACY1L or HsT1731, is a 513 amino acid protein that exists as three alternatively spliced isoforms. Widely expressed and found in multiple CNV (copy-number variant) regions, CCDC102B contains the deletion breakpoint of a maternally inherited deletion, which is 2.7 Mb in size, and maps to human chromosome 18q22.1. CCDC102B may play a role in the pathogenesis of diaphragmatic hernia, microphthalmia, colorectal carcinoma and schizophrenia. Encoding over 300 genes, chromosome 18 contains about 76 million bases. Translocation between chromosomes 18 and 14 is the most common translocation in cancers and occurs in follicular lymphomas. Niemann-Pick disease, hereditary hemorrhagic telangiectasia and erythropoietic protoporphyria are associated with chromosome 18.

订购热线: 4008-898-798

#### Applications

##### Western blotting

Predicted band size: 60 kDa

Positive control: HEPG2, HUVEC and PC-3 cell lysates

Recommended dilution: 200-1000

Gel: 8%SDS-PAGE

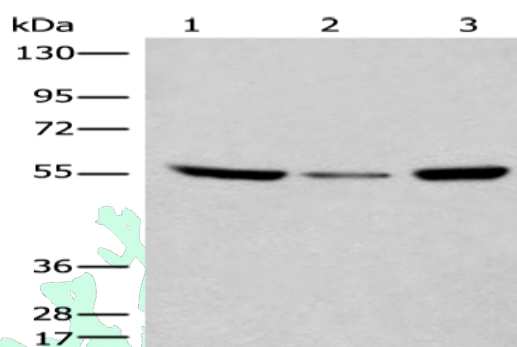
Lysate: 40 µg

Lane 1-3: HEPG2, HUVEC and PC-3 cell lysates

Primary antibody: ml124430(CCDC102B Antibody) at dilution 1/200

Secondary antibody: Goat anti rabbit IgG at 1/8000 dilution

Exposure time: 5 seconds



##### ELISA

Recommended dilution: 5000-10000

联系电话: 4008-898-798, 021-61725725

联系QQ: 2881505695, 2881505696

邮箱: [mlbio\\_cn@yeah.net](mailto:mlbio_cn@yeah.net)

网址: [www.mlbio.cn](http://www.mlbio.cn)