

Anti-CISD1 antibody

Cat. No.	ml124566
Package	25 µl/100 µl/200 µl
Storage	-20°C, pH7.4 PBS, 0.05% NaN ₃ , 40% Glycerol

Product overview

Description	Anti-CISD1 rabbit polyclonal antibody
Applications	ELISA, WB
Immunogen	Full length fusion protein
Reactivity	Human, Mouse, Rat
Content	0.3 mg/ml
Host species	Rabbit
Ig class	Immunogen-specific rabbit IgG
Purification	Antigen affinity purification

Target information

Symbol	CISD1
Full name	CDGSH iron sulfur domain 1
Synonyms	ZCD1; MDS029; C10orf70; mitoNEET
Swissprot	Q9NZ45

Target Background

This gene encodes a protein with a CDGSH iron-sulfur domain and has been shown to bind a redox-active [2Fe-2S] cluster. The encoded protein has been localized to the outer membrane of mitochondria and is thought to play a role in regulation of oxidation. Genes encoding similar proteins are located on chromosomes 4 and 17, and a pseudogene of this gene is located on chromosome 2.

订购热线: 4008-898-798

Applications

Western blotting

Predicted band size: 12 kDa

Positive control: Mouse liver tissue, HEPG2 cell, Mouse brain tissue, Human heart tissue and Mouse skeletal muscle tissue lysates

Recommended dilution: 200-1000

Gel: 12%SDS-PAGE

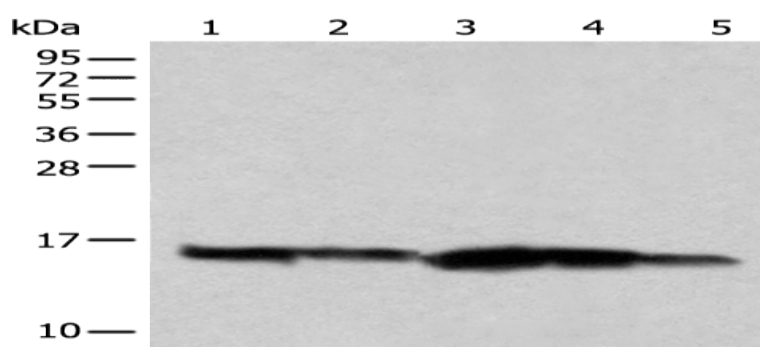
Lysate: 40 µg

Lane 1-5: Mouse liver tissue, HEPG2 cell,
Mouse brain tissue, Human heart tissue and
Mouse skeletal muscle tissue lysates

Primary antibody: ml124566(CISD1 Antibody)
at dilution 1/200

Secondary antibody: Goat anti rabbit IgG at
1/8000 dilution

Exposure time: 3 seconds



ELISA

Recommended dilution: 5000-10000

联系电话: 4008-898-798, 021-61725725

联系QQ: 2881505695, 2881505696

邮箱: mlbio_cn@yeah.net

网址: www.mlbio.cn

mlbio 酶联生物
Good elisakit producers
订购热线: 4008-898-798