

## Anti-AIM2 antibody

<b>Cat. No.</b>	ml121935
<b>Package</b>	25 µl/100 µl/200 µl
<b>Storage</b>	-20°C, pH7.4 PBS, 0.05% NaN <sub>3</sub> , 40% Glycerol

### Product overview

<b>Description</b>	Anti-AIM2 rabbit polyclonal antibody
<b>Applications</b>	ELISA, IHC
<b>Immunogen</b>	Fusion protein of human AIM2
<b>Reactivity</b>	Human
<b>Content</b>	0.8 mg/ml
<b>Host species</b>	Rabbit
<b>Ig class</b>	Immunogen-specific rabbit IgG
<b>Purification</b>	Antigen affinity purification

### Target information

<b>Symbol</b>	AIM2
<b>Full name</b>	absent in melanoma 2
<b>Synonyms</b>	PYHIN4
<b>Swissprot</b>	O14862

### Target Background

Interferon-inducible protein AIM2 (Absent in melanoma 2) is a 343 amino acid protein belonging to the HIN-200 family. Induced by IFN- $\gamma$ , AIM2 is thought to act as a tumor suppressor by repressing NF- $\kappa$ B transcriptional activity. Localized to the nucleus, AIM2 contains one DAPIN domain and one HIN-200 domain. The DAPIN domain is composed mostly of  $\alpha$ -helices and is a protein-protein interaction domain capable of binding other DAPIN domains. The HIN-200 domain has been shown to bind directly to DNA, which, along with the binding of another protein ASC, results in the activation of Caspase-1.

订购热线: 4008-898-798

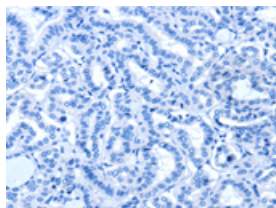
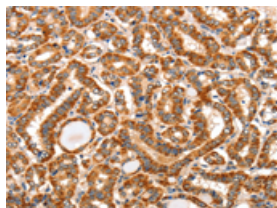
## Applications

### Immunohistochemistry

Predicted cell location: Cytoplasm

Positive control: Human thyroid cancer

Recommended dilution: 50-200

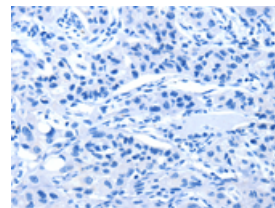
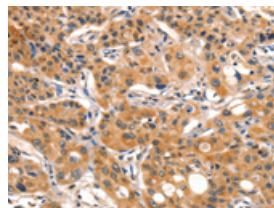


The image on the left is immunohistochemistry of paraffin-embedded Human thyroid cancer tissue using ml121935(AIM2 Antibody) at dilution 1/60, on the right is treated with fusion protein. (Original magnification:  $\times 200$ )

Predicted cell location: Cytoplasm

Positive control: Human lung cancer

Recommended dilution: 50-200



The image on the left is immunohistochemistry of paraffin-embedded Human lung cancer tissue using ml121935(AIM2 Antibody) at dilution 1/60, on the right is treated with fusion protein. (Original magnification:  $\times 200$ )

### ELISA

Recommended dilution: 1000-5000

联系电话: 4008-898-798, 021-61725725

联系QQ: 2881505695, 2881505696

邮箱: [mlbio\\_cn@yeah.net](mailto:mlbio_cn@yeah.net)

网址: [www.mlbio.cn](http://www.mlbio.cn)