

Anti-NR2F2 antibody

Cat. No.	ml161976
Package	25 µl/100 µl/200 µl
Storage	-20°C, pH7.4 PBS, 0.05% NaN ₃ , 40% Glycerol

Product overview

Description	Anti-NR2F2 rabbit polyclonal antibody
Applications	ELISA, WB, IHC
Immunogen	Synthetic peptide of human NR2F2
Reactivity	Human, Mouse, Rat
Content	0.4 mg/ml
Host species	Rabbit
Ig class	Immunogen-specific rabbit IgG
Purification	Antigen affinity purification

Target information

Symbol	NR2F2
Full name	nuclear receptor subfamily 2, group F, member 2
Synonyms	ARP1; CHTD4; NF-E3; NR2F1; SVP40; COUPTFB; TFCOUP2; COUPTFII
Swissprot	P24468

Target Background

This gene encodes a member of the steroid thyroid hormone superfamily of nuclear receptors. The encoded protein is a ligand inducible transcription factor that is involved in the regulation of many different genes. Alternate splicing results in multiple transcript variants.

订购热线: 4008-898-798

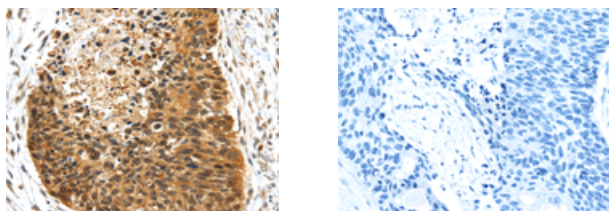
Applications

Immunohistochemistry

Predicted cell location: Nucleus

Positive control: Human esophagus cancer

Recommended dilution: 25-100



The image on the left is immunohistochemistry of paraffin-embedded Human esophagus cancer tissue using ml161976(NR2F2 Antibody) at dilution 1/25, on the right is treated with synthetic peptide. (Original magnification: $\times 200$)

Western blotting

Predicted band size: 46 kDa

Positive control: Human placenta tissue

Recommended dilution: 500-2000

Gel: 8%SDS-PAGE

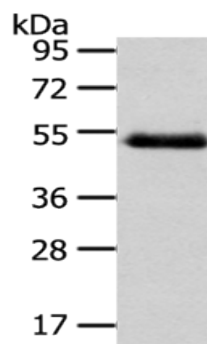
Lysate: 40 μ g

Lane: Human placenta tissue

Primary antibody: ml161976(NR2F2 Antibody) at dilution 1/200

Secondary antibody: Goat anti rabbit IgG at 1/8000 dilution

Exposure time: 1 minute



ELISA

Recommended dilution: 2000-5000

联系电话: 4008-898-798, 021-61725725

联系QQ: 2881505695, 2881505696

邮箱: mlbio_cn@yeah.net

网址: www.mlbio.cn