

## Anti-CYB5R1 antibody

<b>Cat. No.</b>	ml124697
<b>Package</b>	25 µl/100 µl/200 µl
<b>Storage</b>	-20°C, pH7.4 PBS, 0.05% NaN <sub>3</sub> , 40% Glycerol

### Product overview

<b>Description</b>	Anti-CYB5R1 rabbit polyclonal antibody
<b>Applications</b>	ELISA, WB, IHC
<b>Immunogen</b>	Fusion protein of human CYB5R1
<b>Reactivity</b>	Human, Mouse, Rat
<b>Content</b>	0.7 mg/ml
<b>Host species</b>	Rabbit
<b>Ig class</b>	Immunogen-specific rabbit IgG
<b>Purification</b>	Antigen affinity purification

### Target information

<b>Symbol</b>	CYB5R1
<b>Full name</b>	cytochrome b5 reductase 1
<b>Synonyms</b>	B5R1; B5R2; B5R.1; NQO3A2; humb5R2
<b>Swissprot</b>	Q9UHQ9

### Target Background

NADH-cytochrome b5 reductases participate in a variety of physiological processes including biosynthesis of cholesterol, methemoglobin reduction of erythrocytes, elongation of fatty acids and metabolism of drugs. CYB5R1 (cytochrome b5 reductase 1), also known as NADH-cytochrome b5 reductase 1, B5R1, NQO3A2, humb5R2 or NAD(P)H:quinone oxidoreductase type 3 polypeptide A2, is a 305 amino acid single-pass membrane protein that contains one FAD-binding FR-type domain and belongs to the flavoprotein pyridine nucleotide cytochrome reductase family. Widely expressed, CYB5R1 binds FAD as a cofactor and is encoded by a gene located on human chromosome 1. Human chromosome 1 spans 260 million base pairs, contains over 3,000 genes, comprises nearly 8% of the human genome and houses a large number of disease-associated genes, including those that are involved in familial adenomatous polyposis, Stickler syndrome, Parkinson's disease, Gaucher disease, schizophrenia and Usher syndrome.

订购热线: 4008-898-798

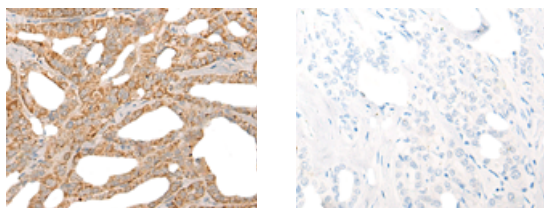
### Applications

#### Immunohistochemistry

Predicted cell location: Cytoplasm and Cell membrane

Positive control: Human thyroid cancer

Recommended dilution: 25-100



The image on the left is immunohistochemistry of paraffin-embedded Human thyroid cancer tissue using ml124697(CYB5R1 Antibody) at dilution 1/30, on the right is treated with fusion protein. (Original magnification:  $\times 200$ )

#### Western blotting

Predicted band size: 34 kDa

Positive control: HEPG2, Hela, K562 and PC-3 cell lysates

Recommended dilution: 200-1000

Gel: 12% SDS-PAGE

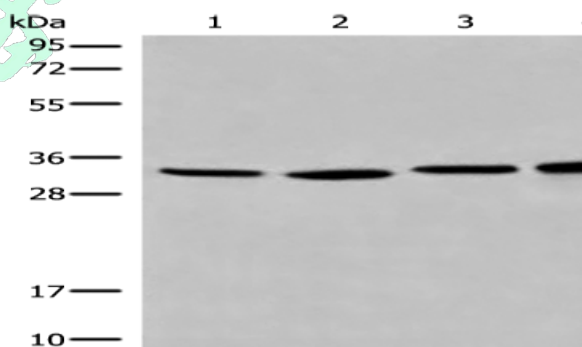
Lysate: 40  $\mu$ g

Lane 1-4: HEPG2, Hela, K562 and PC-3 cell lysates

Primary antibody: ml124697(CYB5R1 Antibody) at dilution 1/300

Secondary antibody: Goat anti rabbit IgG at 1/8000 dilution

Exposure time: 5 seconds



#### ELISA

Recommended dilution: 5000-10000

联系电话: 4008-898-798, 021-61725725

联系QQ: 2881505695, 2881505696

邮箱: [mlbio\\_cn@yeah.net](mailto:mlbio_cn@yeah.net)

网址: [www.mlbio.cn](http://www.mlbio.cn)